

DK Series



The Passionate Pursuit of Perfection

en.bole-machinery.com

BOLE Customer Service Center

BOLE MACHINERY

ADD: No.99 Weisan Road, Xiaogang, Ningbo, China

PC: 315821

TEL: +86-574-86188007

FAX: +86-574-86188008

E-mail: bole-sales@bole-machinery.com

THIS CATALOGUE ARE PROTECT BY LAW OF COPY RIGHT.
ANY USE WITHOUT THE EXPRESS PERMISSION OF THE LAW OF COPY RIGHT,
MUST GET APPROVAL OF BOLE IN ADVANCE.

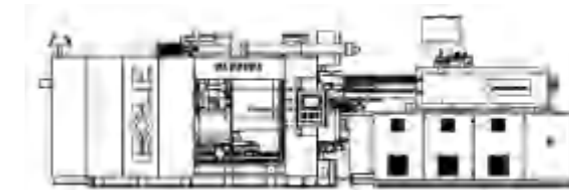
THIS VERSION WAS PRINTED IN JANUARY 2022,
ANY DIFFERENCE SPECIFICATION FROM OLD VERSION SHOULD BE SUBJECT TO THIS VERSION.

DK Series Two Platen Injection Moulding Machine

German Origin



Injection Moulding Machine



Operate independently to ensure German quality and present European performance perfectly.

More than 100 tests, more than 20 patents, speed, accuracy, stability are increased, It will become the first choice in automobile industry compared with European products.



Automobile industry



Household electrical appliance industry



Deep cavity product



Logistics building material





Two Platen
Injection Moulding Machine
Technical
Pain Points
in China

**Mold open & close
not smoothly**

Limitation of controller program development, most of the manufactures have to slow down the speed of mold open and close to avoid the mold and machine shaking.

Tie bar easily to break

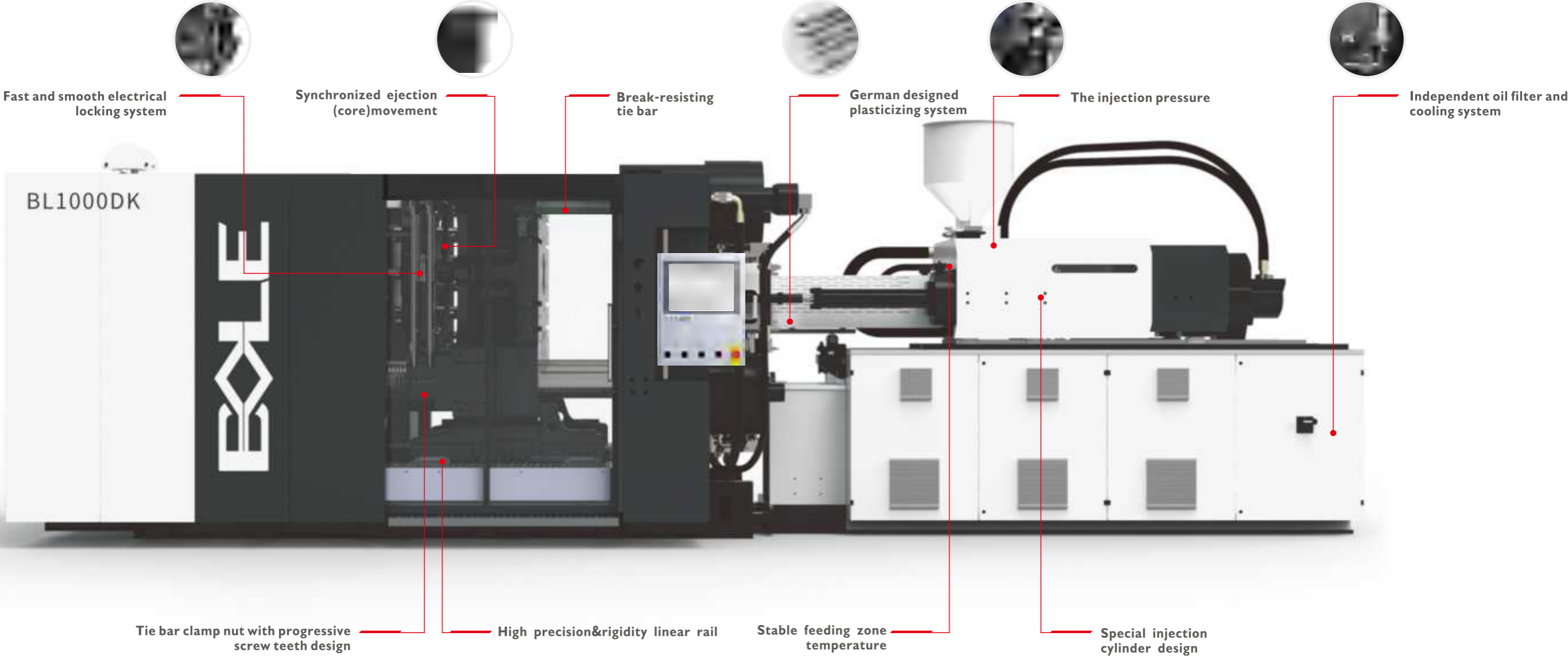
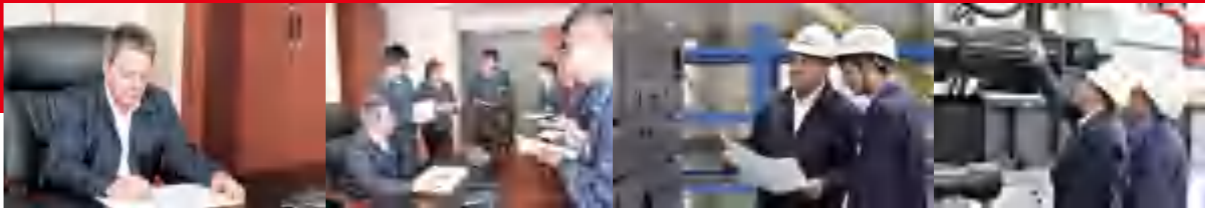
It's the normal case that one tie bar goes along with the machine as a spare part in case of tie bar break , which cause many high-end customers not willing to use China Made two platen machine even though the manufactures try hard to improve.

Lock nut unsteady

Production and operation is often stopped by lock nut failure.

Bole two platen injection moulding machine can solve these problems effectively.

DK Series Two Platen Injection Moulding Machine



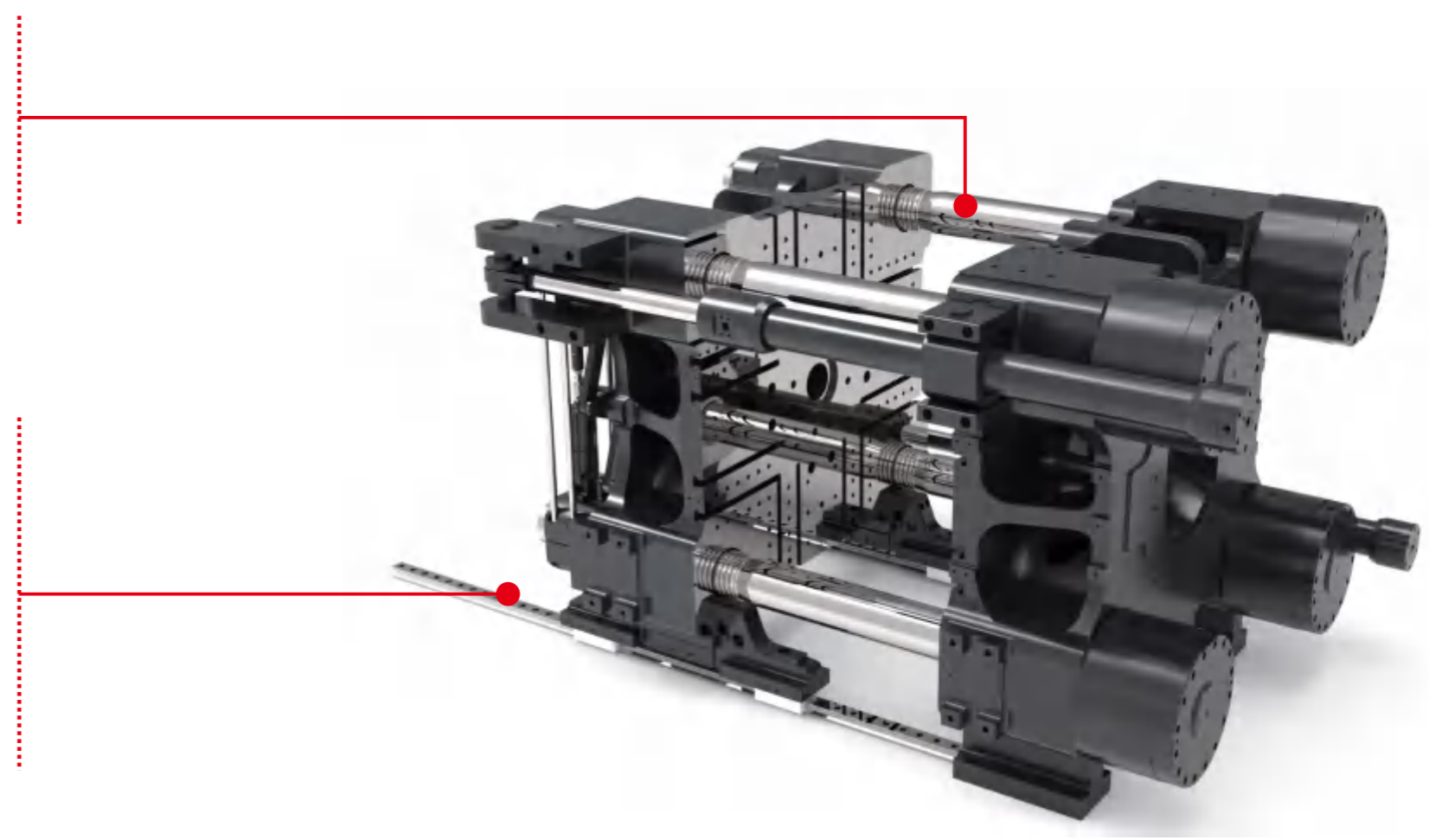
DK series two-platen injection moulding machine ten core strengths

01 Break-resisting tie bar

Less stress for weak point of tie bar, there is almost no risk of fracture, high overload and bending resisted tie bar. Patent applied.

02 High precision&rigidity linear rail

DK series two platen machines adopt high-precision and high-rigidity liner guide coordinates with sliding foot to support movable platen, guaranteeing high .



DK series two-platen injection moulding machine ten core strengths



03 Break-resisting tie bar

- ④ Originate from Germany design Plasticizing System, efficiency excess above 20% of domestic level (Common plastics such as ABS, PS, PP, etc).
- ④ Custom made complicated technical requirement, applied to special plasticizing system.
- ④ All series can fit with A\B\C screw, L/D ratio 23:1, to achieve the best plasticizing effect and efficiency.

04 Fast and smooth electrical locking system

- Adopt direct driving motor, high efficiency and energy saving.
- Closed loop control, fast and accurate.
- Left and right independent control, stable and reliable.
- Easy to maintain, clean without stains.



DK series two-platen injection moulding machine, developed by the German chief engineer, reshapes the Chinese two-platen injection machine market.

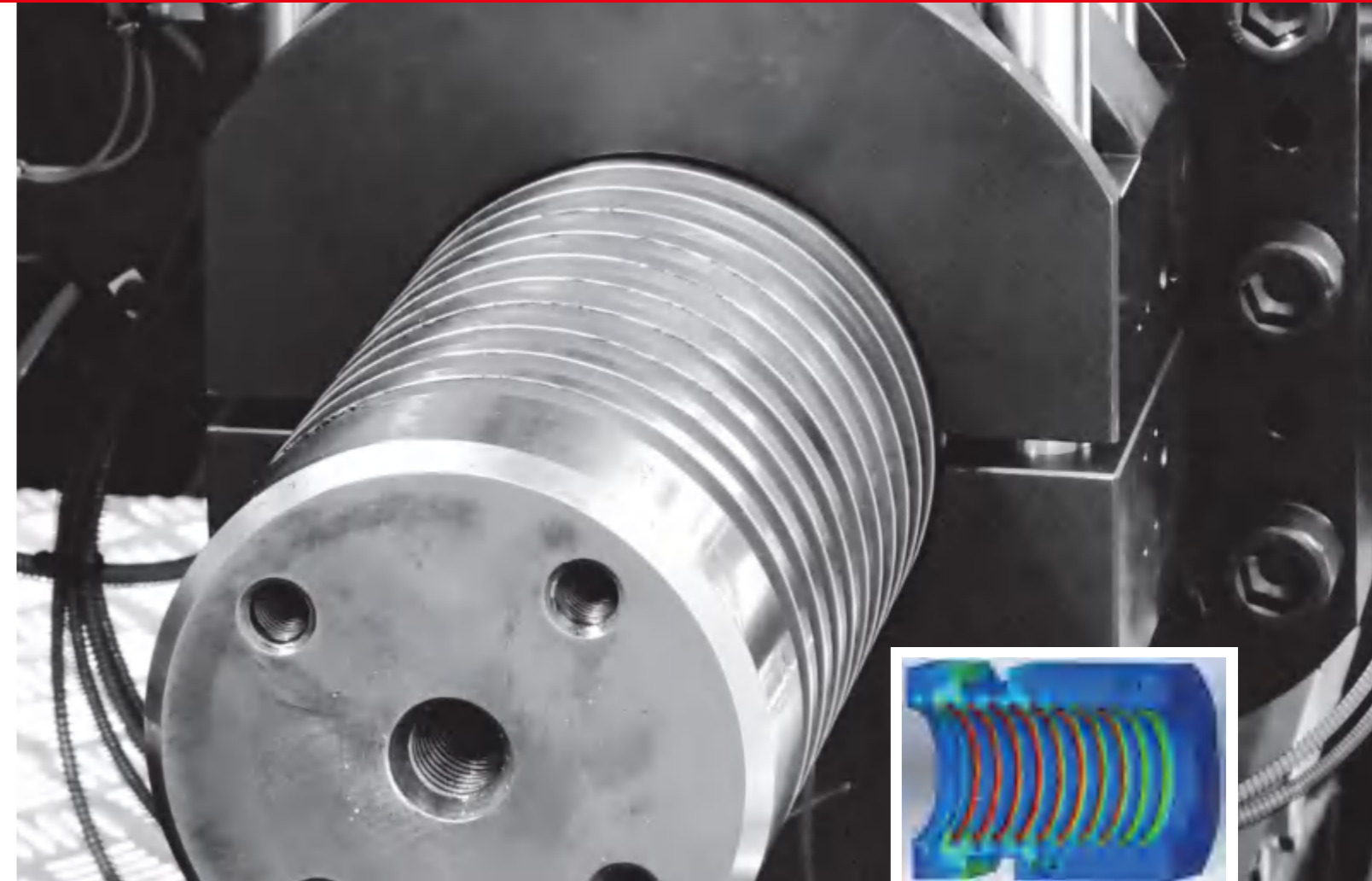
05 Synchronized ejection (core) movement

simultaneous eject (core pulling) function as standard, improve machine cycle efficiency.



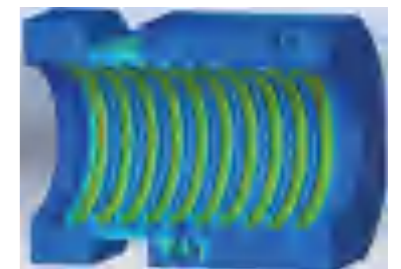
06 Special injection cylinder design

The new injection cylinder has extremely low oil return resistance and cooperates with the frame structure of the linear guide to reduce the friction of the injection part and greatly improve the control precision of the injection unit.



07 Tie bar clamp nut with progressive screw teeth design

Each stress on even teeth, longer life time for locking nuts.

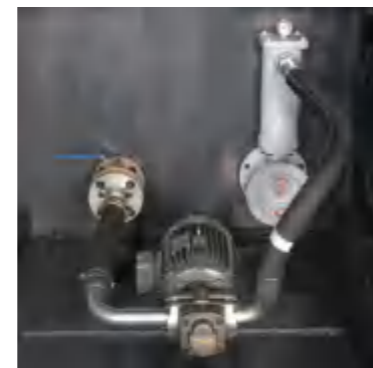


Variable tooth spacing, force even



08 Independent oil filter and cooling system

Very compact and less space occupation. Stabilize the entire oil temperature without any other interruption, such as cycle time and other working elements.



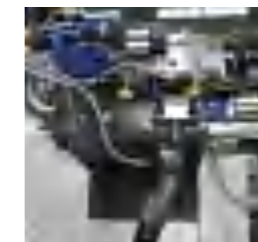
09 Stable feeding zone temperature

The feed throat temperature is brought into the closed loop control of the temperature unit, thus the efficiency and precision of the whole injection molding unit are improved. To avoid low injection accuracy due to inconsistency and caking.



10 The injection pressure

The injection pressure gets feedback always, and the injection curve makes it easier for the customer to adjust the process of the product.



Technical Data

Description		BL520DK			BL650DK			BL800DK			BL850DK-W		
		BL520DK/Z2950			BL650DK/Z3700			BL800DK/Z4800			BL850DK/Z5900		
Injection Unit													
International specification		Z2950			Z3700			Z4800			Z5900		
Screw diameter	mm	70	75	85	75	80	90	80	85	90	80	90	100
Screw L/D ratio		23	23	23	23	23	23	23	23	23	23	23	23
Calculated injection volume	cm ³	1423	1634	2099	1832	2085	2639	2286	2581	2893	2512	3179	3925
Maximum Shot weight (PS)	g	1310	1503	1931	1686	1918	2428	2103	2374	2662	2311	2925	3611
Maximum Shot weight (PS)	oz	46	53	68	59	68	86	74	84	94	82	103	127
Max. Injection speed	mm/s	120			119			116			106		
Injection rate in to the air	cm ³ /s	470	540	694	525	598	756	583	659	738	533	675	833
Injection rate in to the air (PS)	g/s	433	497	638	478	544	688	536	599	672	490	621	766
Specific Injection pressure	MPa	212	185	144	204	179	142	210	186	166	230	182	147
Max. Screw speed	r/min	160			147			140			135		
Clamping Unit													
Clamping force	Ton	531			663			816			867		
Clamping force	kN	5200			6500			8000			8500		
Size of mould platens(h x v)	mm x mm	1260×1210			1380×1280			1510×1380			1610×1430		
Clearance between tie bars (h x v)	mm x mm	860×810			960×860			1060×920			1160×910		
Opening stroke	mm	1100/600			1300/750			1400/800			1600/950		
Min. mould height	mm	350			350			400			450		
Max. mould height	mm	850			900			1000			1100		
Max. daylight	mm	1450			1650			1800			2050		
Ejector stroke	mm	250			250			280			280		
Ejector force forward	kN	124			124			232			232		
Ejector force back	kN	75			75			155			155		
Number of ejector rods	PC	13			21			17			17		
Driving and Heating													
Installed heater power	kW	27	29.2	31.4	32	35.5	37.5	36	38.3	40.6	43	48.5	54
Drive power	kW	42+30			42+42			50+42			50+42		
Working pressure	MPa	17.5			17.5			17.5			17.5		
Other													
Oil tank capacity	L	600			800			900			1000		
Maximum mould weight	kg	6500			8000			9500			12000		
Machine weight	ton	18			22			26			30		
Machine dimensions (LxWxH)	m x m x m	7.39×2.46×2.68			7.75×2.57×2.96			8.35×2.93×2.91			9.15×3.17×3.10		

BL1000DK			BL1050DK-W			BL1100DK			BL1200DK-W			BL1300DK-W		
BL1000DK/Z5900			BL1050DK Z7900			BL1100DK/Z7900			BL1200DK/Z7900			BL1300DK/Z10000		
Z5900			Z7900			Z7900			Z7900			Z10000		
80	90	100	90	100	110	90	100	110	90	100	110	100	110	120
23	23	23	23	23	23	23	23	23	23	23	23	23	23	23
2512	3179	3925	3467	4280	5180	3467	4280	5180	3467	4280	5180	4671	5652	6726
2311	2925	3611	3189	3938	4765	3189	3938	4765	3189	3938	4765	4297	5199	6188
82	103	127	112	138	168	112	138	168	112	138	168	152	184	219
106			104			104			104			104		
533	675	833	666	822	995	666	822	995	666	822	995	820	992	1180
490	621	766	612	756	915	612	756	915	612	756	915	746	902	1074
230	182	147	230	186	154	230	186	154	230	186	154	215	178	149
135			120			120			120			120		
1020			1224			1122			1224			1327		
10000			12000			11000			12000			13000		
1630×1550			1985×1725			1825×1685			1985×1725			1985×1725		
1160×1020			1440×1200			1260×1120			1420×1160			1420×1160		
1600/950			2270/1500			1870/1150			2270/1500			2270/1500		
450			580			480			580			580		
1100			1350			1200			1350			1350		
2050			2850			2350			2850			2850		
280			320			320			320			320		
232			232			232			232			232		
155			155			155			155			155		
17			25			25			25			25		
43			48.5			54			50			54.2		
54			50			54.2			58.4			50		
50+42			50+17+42			50+17+42			50+17+42			50+21+50		
17.5			17.5			17.5			17.5			17.5		
1000			1100			1100			1100			1100		
12000			15000			15000			15000			15000		
35			49			45			49			52		
9.15×3.19×3.10			10.78×3.52×3.16			10.18×3.31×3.15			10.78×3.52×3.16			10.78×3.52×3.64		

Technical Data

Description		BL1400DK			BL1500DK-W			BL1700DK		
		BL1400DK/Z13400			BL1500DK/Z13400			BL1700DK/Z19300		
Injection Unit										
International specification		Z13400			Z13400			Z19300		
Screw diameter	mm	110	120	130	110	120	130	120	135	145
Screw L/D ratio		23	23	23	23	23	23	23	23	23
Calculated injection volume	cm ³	6082	7238	8495	6082	7238	8495	8200	10378	11972
Maximum Shot weight (PS)	g	5596	6659	7815	5596	6659	7815	7544	9547	11014
Maximum Shot weight (PS)	oz	197	235	276	197	235	276	266	337	388
Max. Injection speed	mm/s	102			105			100		
Injection rate in to the air	cm ³ /s	969	1153	1353	969	1153	1353	1170	1481	1708
Injection rate in to the air (PS)	g/s	891	1060	1245	891	1060	1245	1076	1362	1572
Specific Injection pressure	MPa	221	186	158	221	186	158	236	186	161
Max. Screw speed	r/min	115			115			100		
Clamping Unit										
Clamping force	Ton	1429			1531			1735		
Clamping force	kN	14000			15000			17000		
Size of mould platens(h x v)	mm x mm	2090×1990			2190×1890			2260×2100		
Clearance between tie bars (h x v)	mm x mm	1420×1320			1520×1220			1620×1460		
Opening stroke	mm	2200/1500			2200/1500			2570/1700		
Min. mould height	mm	650			650			680		
Max. mould height	mm	1350			1350			1550		
Max. daylight	mm	2850			2850			3250		
Ejector stroke	mm	360			360			400		
Ejector force forward	kN	309			309			309		
Ejector force back	kN	210			210			210		
Number of ejector rods	PC	25			25			25		
Driving and Heating										
Installed heater power	kW	72	75	87	72	75	87	75	96	115
Drive power	kW	50+50+50			50+50+50			50+50+42+50		
Working pressure	MPa	17.5			17.5			17.5		
Other										
Oil tank capacity	L	1600			1600			2100		
Maximum mould weight	kg	21000			21000			35000		
Machine weight	ton	60			61			75		
Machine dimensions (LxWxH)	m x m x m	11.53×3.51×3.81			11.53×3.74×3.81			13.23×4.05×4.20		

.17. Due to the continuous product improvement, we reserve the right to adjust the individual parameters, without notice.

BL1850DK-W			BL2000DK			BL2100DK-W			BL2300DK			BL2500DK-W		
BL1850DK/Z19300			BL2000DK/Z19300			BL2100DK/Z19300			BL2300DK/Z25800			BL2500DK/Z25800		
Z19300			Z19300			Z19300			Z25800			Z25800		
120	135	145	120	135	145	120	135	145	140	150	160	140	150	160
23	23	23	23	23	23	23	23	23	23	23	23	23	23	23
8200	10378	11972	8200	10378	11972	8200	10378	11972	12084	13872	15783	12084	13872	15783
7544	9547	11014	7544	9547	11014	7544	9547	11014	11117	12762	14521	11117	12762	14521
266	337	388	266	337	388	266	337	388	392	450	512	392	450	512
100			100			100			90			90		
1170	1481	1708	1170	1481	1708	1170	1481	1708	1361	1562	1778	1361	1562	1778
1076	1362	1572	1076	1362	1572	1076	1362	1572	1252	1437	1636	1252	1437	1636
236	186	161	236	186	161	236	186	161	213	186	164	213	186	164
100			100			100			84			84		
Driving and Heating														
1888			2041			2143			2347			2551		
18500			20000			21000			23000			25000		
2500×2060			2480×2320			2500×2060			2560×2360			2760×2360		
1860×1420			1720×1560			1850×1410			1820×1620			2020×1620		
2570/1700			2580/1700			2580/1700			2720/1800			2720/1800		
720			720			720			780			780		
1600			1600			1600			1700			1700		
3300			3300			3300			3500			3500		
400			450			450			450			450		
309			496			496			465			465		
210			396			396			310			310		
25			25			25			25			29		
Other														
2100			2100			2100			2700			2700		
35000			42000			42000			50000			50000		
82			90			83			120			123		
13.25×4.26×4.11			13.41×4.34×4.20			13.25×4.26×4.11			14.55×4.24×4.20			14.57×4.46×4.20		

Due to the continuous product improvement, we reserve the right to adjust the individual parameters, without notice.

.18.

Technical Data

Description		BL2700DK			BL2800DK-W			BL3000DK		
		BL2700DK/Z36800			BL2800DK/Z36800			BL3000DK/Z36800		
Injection Unit										
International specification		Z36800			Z36800			Z36800		
Screw diameter	mm	160	170	185	160	170	185	160	170	185
Screw L/D ratio		23	23	23	23	23	23	23	23	23
Calculated injection volume	cm ³	18598	20996	24864	18598	20996	24864	18598	20996	24864
Maximum Shot weight (PS)	g	17110	19316	22875	17110	19316	22875	17110	19316	22875
Maximum Shot weight (PS)	oz	603	681	807	603	681	807	603	681	807
Max. Injection speed	mm/s	85			85			85		
Injection rate in to the air	cm ³ /s	1855	2094	2480	1855	2094	2480	1855	2094	2480
Injection rate in to the air (PS)	g/s	1707	1927	2282	1707	1927	2282	1707	1927	2282
Specific Injection pressure	MPa	198	175	148	198	175	148	198	175	148
Max. Screw speed	r/min	69			69			69		
Clamping Unit										
Clamping force	Ton	2755			2857			3061		
Clamping force	kN	27000			28000			30000		
Size of mould platens(h x v)	mm x mm	2700×2500			2850×2500			2850×2650		
Clearance between tie bars (h x v)	mm x mm	1920×1720			2170×1720			2020×1820		
Opening stroke	mm	2920/1900			2920/1900			3020/2000		
Min. mould height	mm	780			780			880		
Max. mould height	mm	1800			1800			1900		
Max. daylight	mm	3700			3700			3900		
Ejector stroke	mm	500			500			500		
Ejector force forward	kN	465			465			465		
Ejector force back	kN	310			310			310		
Number of ejector rods	PC	29			29			29		
Driving and Heating										
Installed heater power	kW	128	158	173	128	158	173	128	158	173
Drive power	kW	50+50+50+50+50			50+50+50+50+50			50+50+50+50+50		
Working pressure	MPa	17.5			17.5			17.5		
Other										
Oil tank capacity	L	2100			2100			2100		
Maximum mould weight	kg	68000			68000			72000		
Machine weight	ton	135			143			155		
Machine dimensions (LxWxH)	m x m x m	15.98×4.45×4.48			15.98×4.78×4.48			16.18×4.88×4.48		

.19. Due to the continuous product improvement, we reserve the right to adjust the individual parameters, without notice.

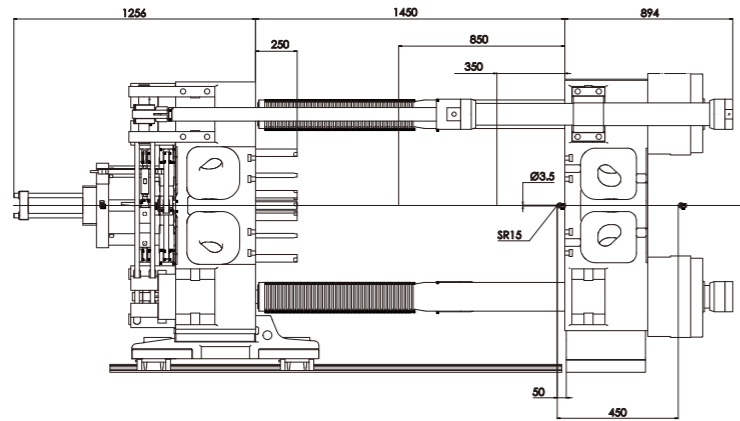
BL3000DK-W		BL3500DK			BL4000DK			BL5000DK			BL6800DK					
		BL3000DK/Z36800			BL3500DK/Z58100			BL4000DK/Z79800			BL5000DK/Z79800			BL6800DK/Z119000		
		Z36800			Z58100			Z79800			Z79800			Z119000		
		160	170	185	185	200	220	200	220	240	200	220	240	220	240	260
		23	23	23	23	23	23	23	23	23	23	23	23	23	23	23
		18598	20996	24864	28224	32987	39914	38013	45996	54739	38013	45996	54739	57780	68763	80701
		17110	19316	22875	25966	30348	36720	34972	42316	50360	34972	42316	50360	53157	63262	74245
		603	681	807	916	1070	1295	1233	1492	1776	1233	1492	1776	1875	2231	2619
		85			66			55			55			50		
		1855	2094	2480	1775	2074	2510	1750	2117	2520	1750	2117	2520	2138	2545	2987
		1707	1927	2282	1633	1908	2309	1610	1948	2318	1610	1948	2318	1968	2342	2748
		198	175	148	206	176	146	210	174	146	210	174	146	208	174	148
		69			60			54			54			50		
		3061			3571			4082			5102			6939		
		30000			35000			40000			50000			68000		
		2850×2500			3120×2720			3340×2790			3570×3020			4150×3450		
		2150×1700			2220×1820			2420×1870			2550×2000			3000×2300		
		3020/2000			3180/2160			3480/2360			3680/2460			4200/2900		
		880			980			980			1080			1200		
		1900			2000			2100			2300			2500		
		3900			4160			4460			4760			5400		
		500			550			550			550			1000		
		465			465			619			619			891		
		310			310			420			420			616		
		29			33			33			33			33		
		128	158	173	173	216	236	216	236	263	216	236	263	236	263	290
		50+50+50+50+50			50+50+50+50+50			50+50+50+50+50			50+50+50+50+50			50+50+50+50+50+42		
		17.5			17.5			17.5			17.5			17.5		
		2100			2100			2100			2100			2600		
		72000			80000			100000			100000			180000		
		146			195			254			330			420		
		16.18×4.78×4.48			17.91×5.12×4.69			20.50×5.63×4.99			23.5×5.6×5.0			25.5×6.5×6.0		

Due to the continuous product improvement, we reserve the right to adjust the individual parameters, without notice.

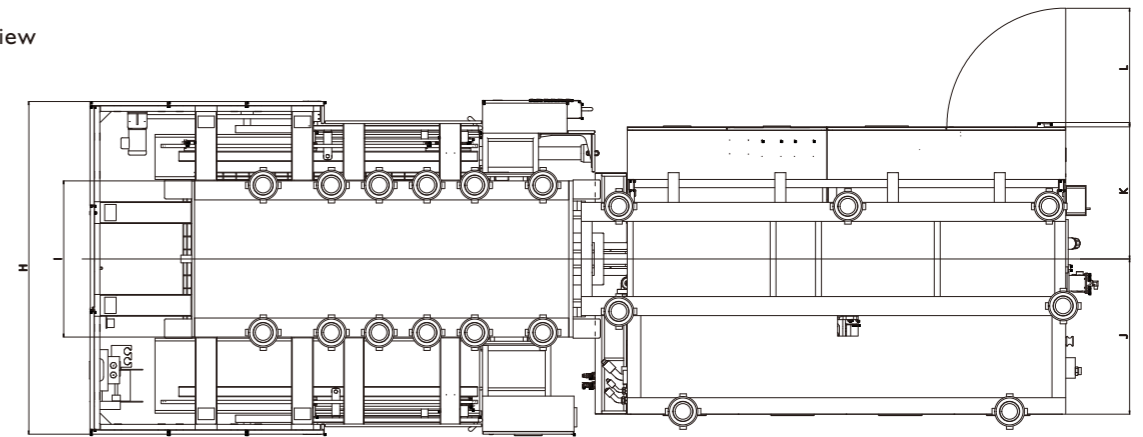
.20.

Platen Dimensions & Machine Dimensions

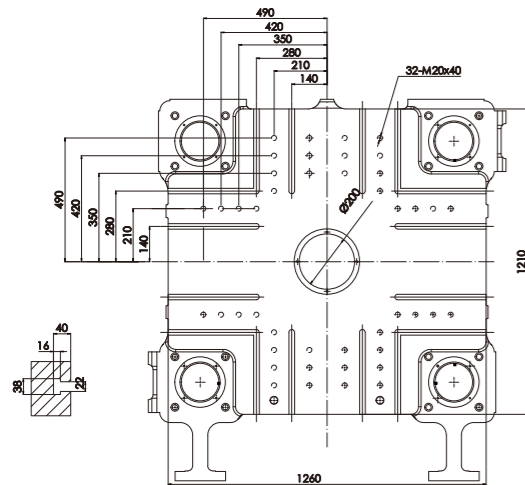
Clamping unit



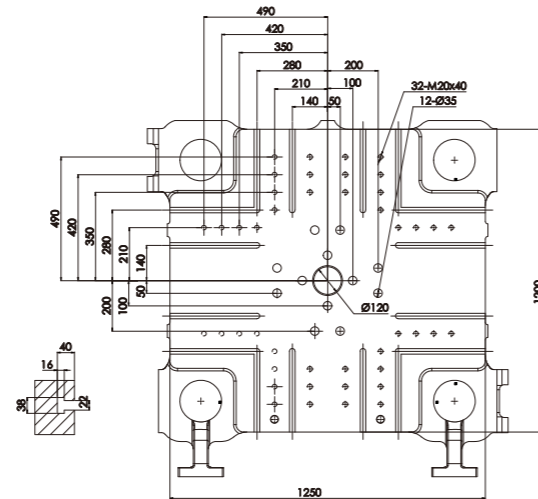
upward view



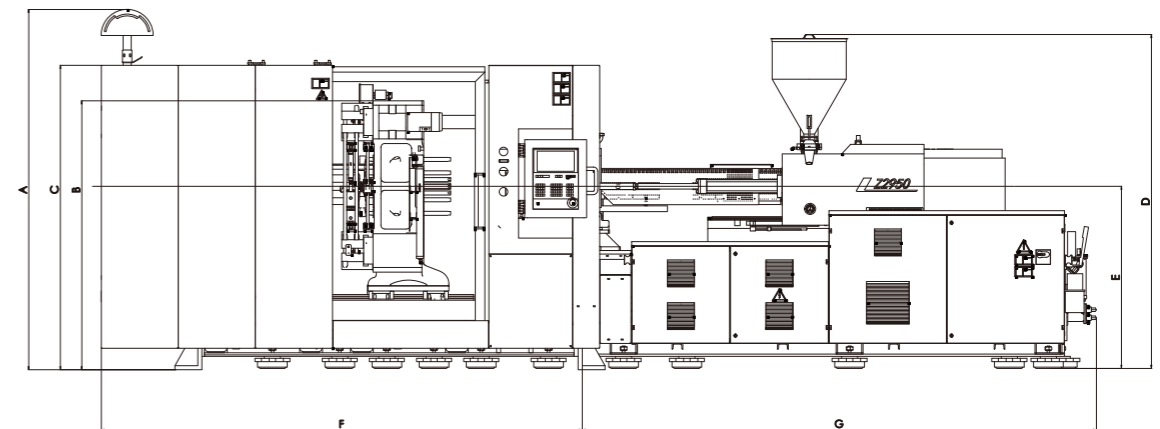
Dimensions of stationary platen



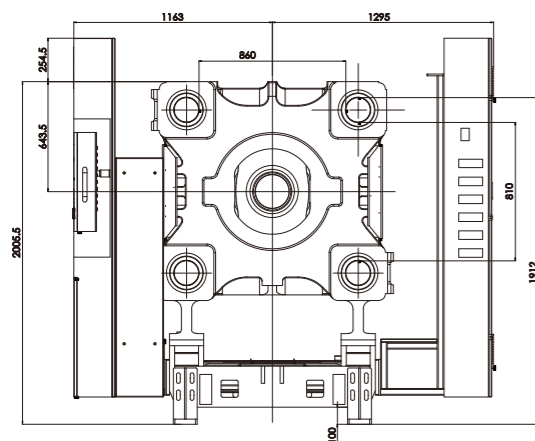
Dimensions of moving platen



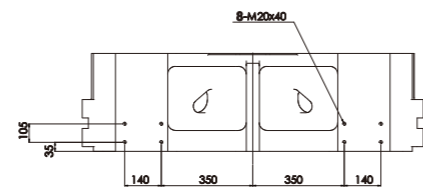
main view



Robot installation dimensions



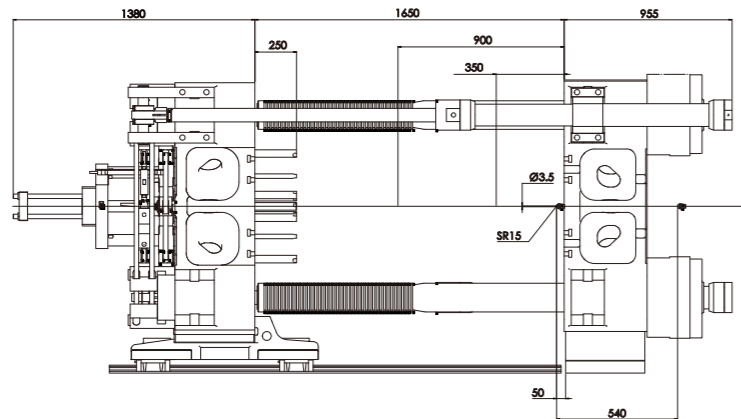
Robot installation dimensions on stationary platen



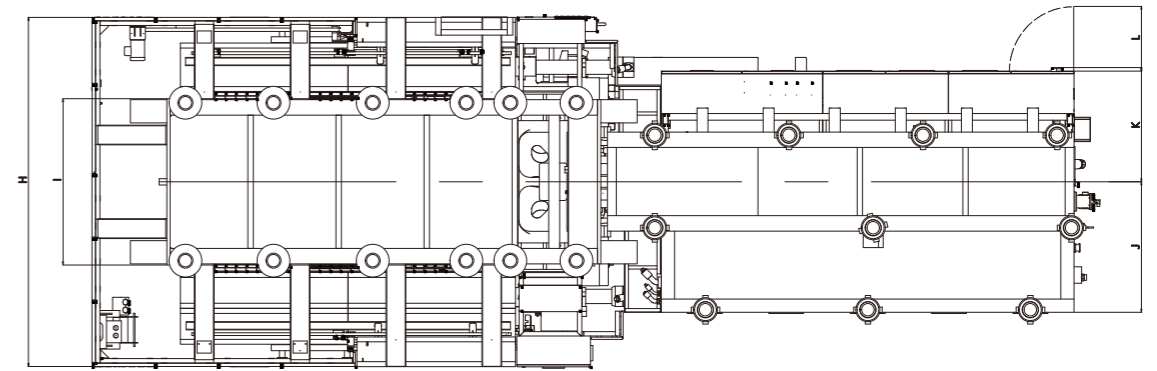
MODEL	A	B	C	D	E	F	G	H	I	J	K	L
BL520DK	2675	1996	2260	2490	1362	3570	3818	2458	1145	1137	1000	870

Platen Dimensions & Machine Dimensions

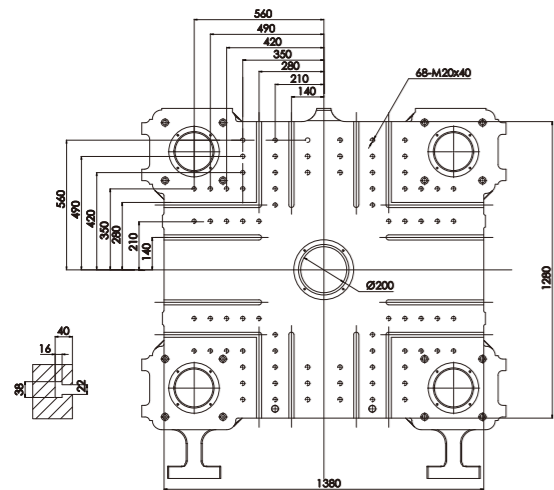
▼ Clamping unit



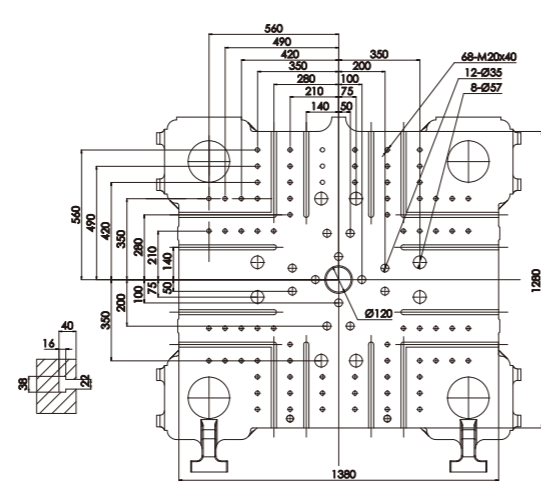
▼ upward view



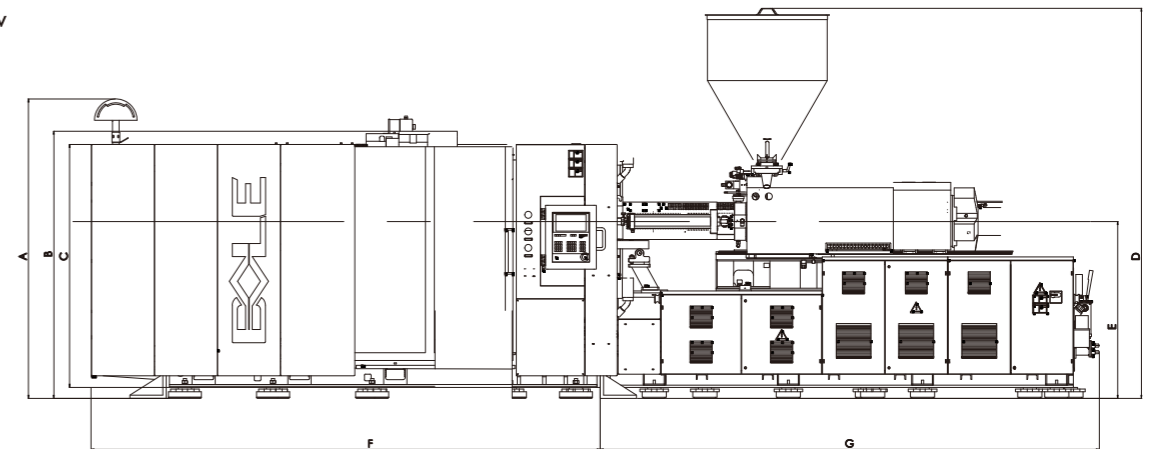
▼ Dimensions of stationary platen



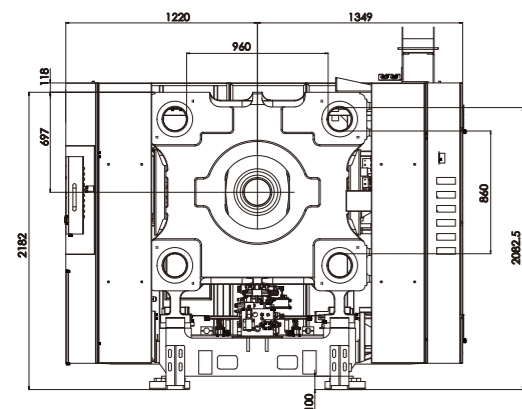
▼ Dimensions of moving platen



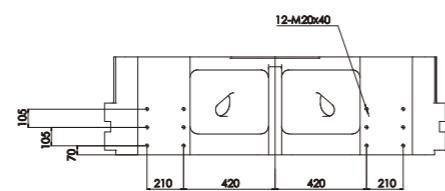
▼ main view



▼ Robot installation dimensions



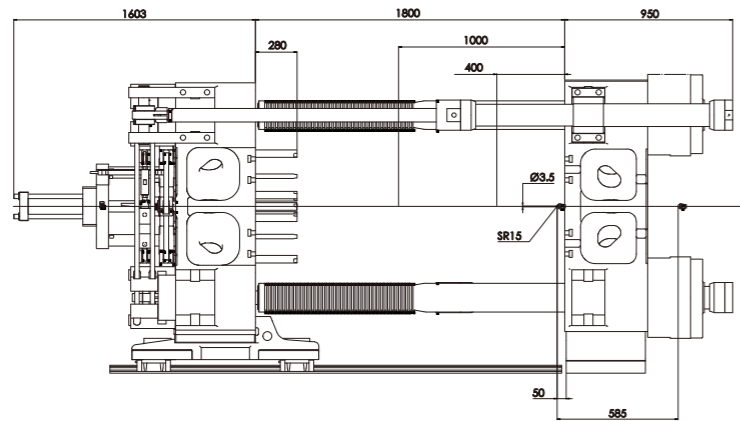
▼ Robot installation dimensions on stationary platen



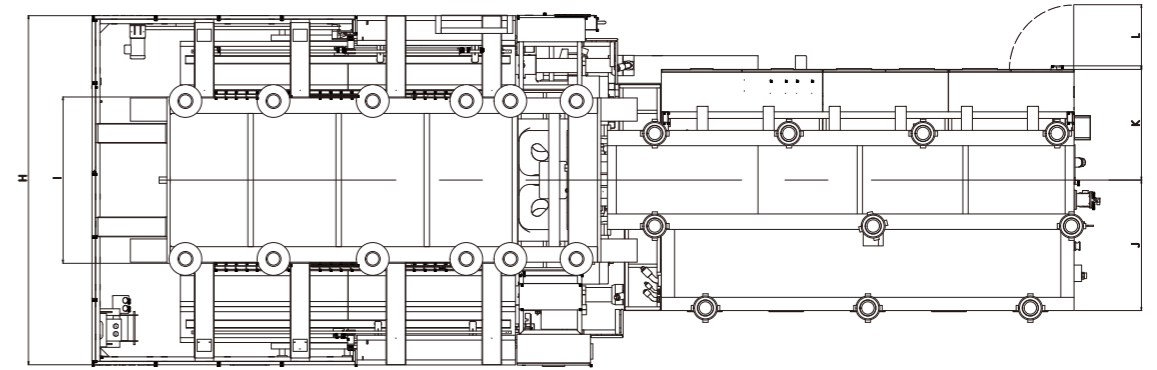
MODEL	A	B	C	D	E	F	G	H	I	J	K	L
BL650DK	2715	2182	2300	2957	1485	3900	3848	2569	1274	1053	964	864

Platen Dimensions & Machine Dimensions

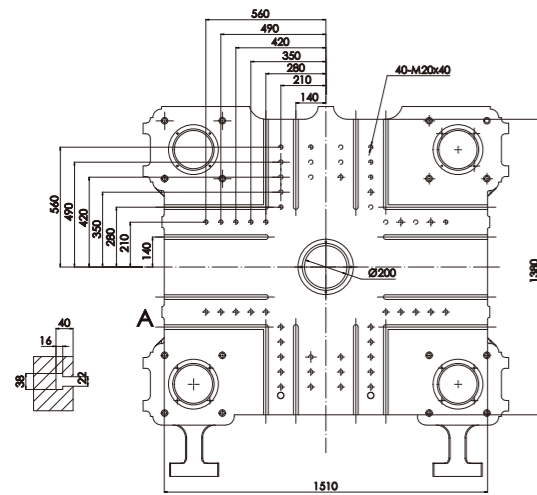
▼ Clamping unit



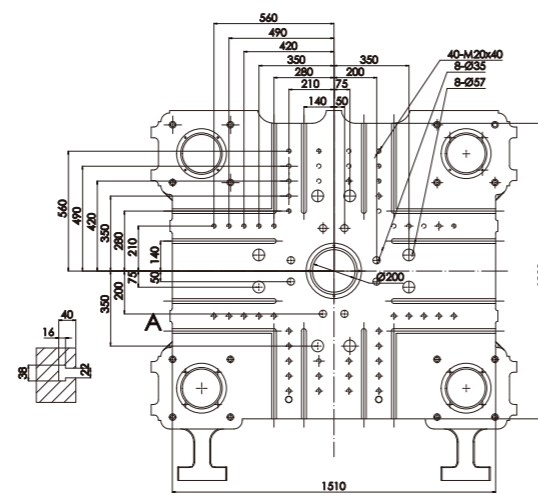
▼ upward view



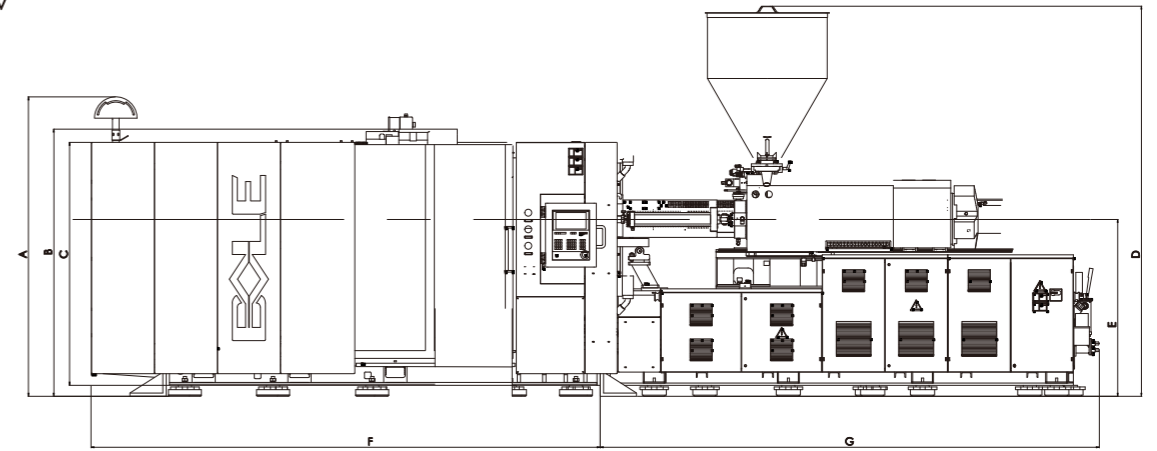
▼ Dimensions of stationary platen



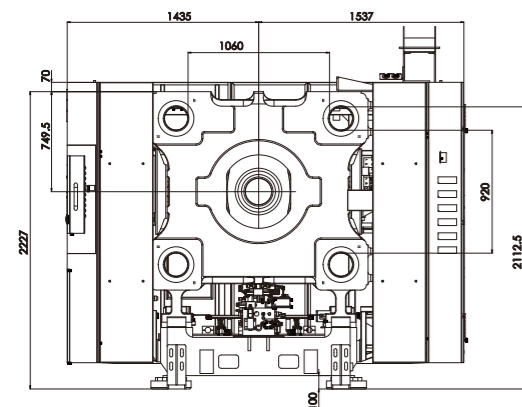
▼ Dimensions of moving platen



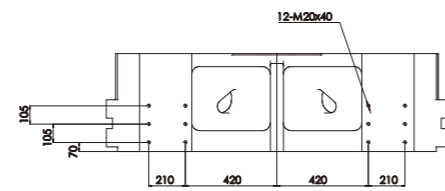
▼ main view



▼ Robot installation dimensions



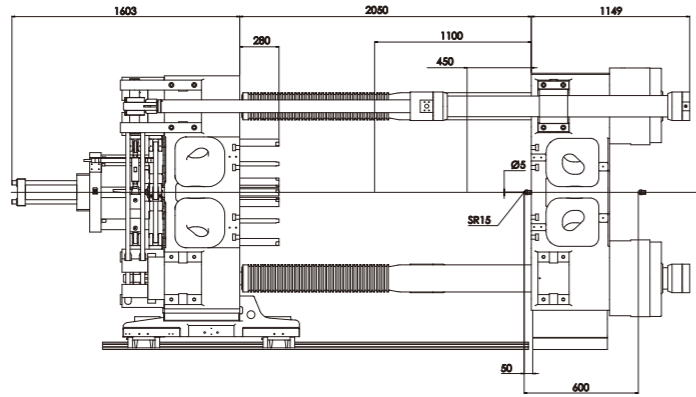
▼ Robot installation dimensions on stationary platen



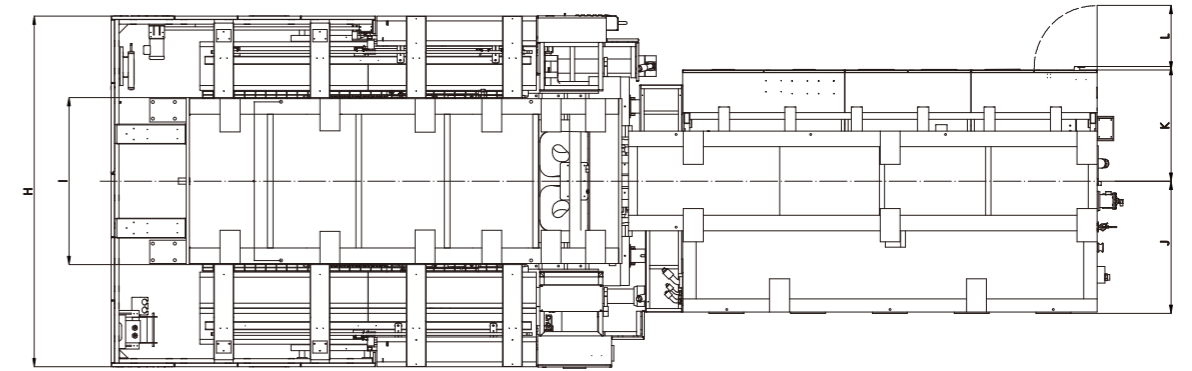
MODEL	A	B	C	D	E	F	G	H	I	J	K	L
BL800DK	2714	2227	2297	2906	1477.5	4274	4071	2930	1370	1137	963	864

Platen Dimensions & Machine Dimensions

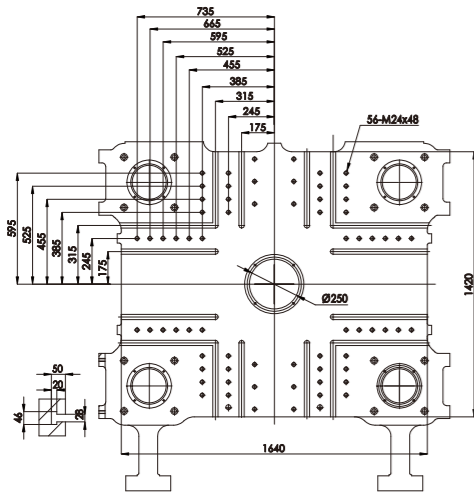
▼ Clamping unit



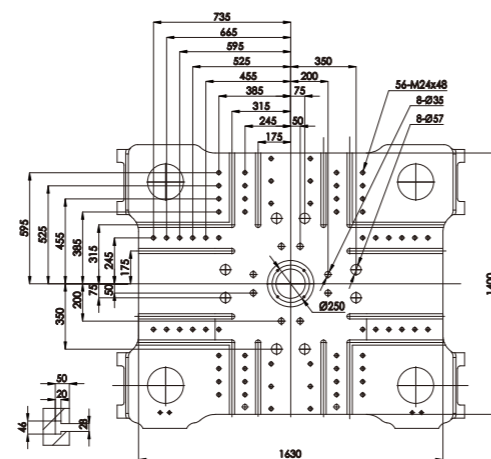
▼ upward view



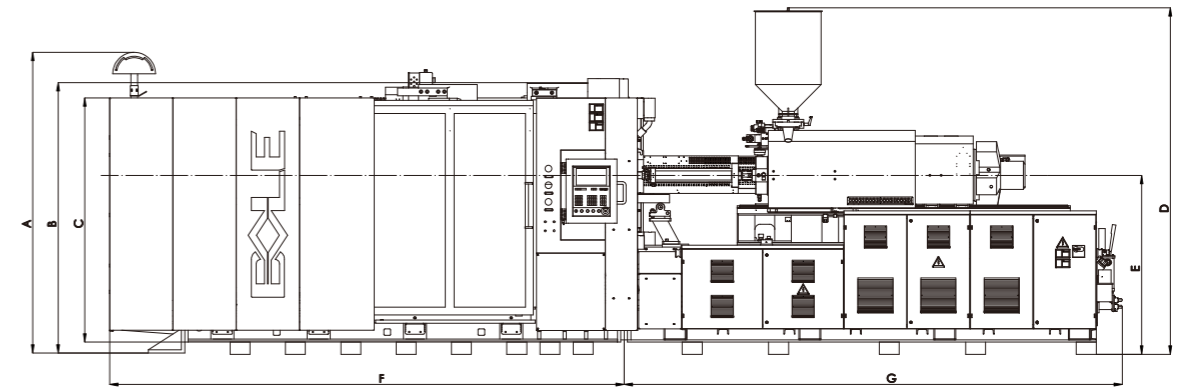
▼ Dimensions of stationary platen



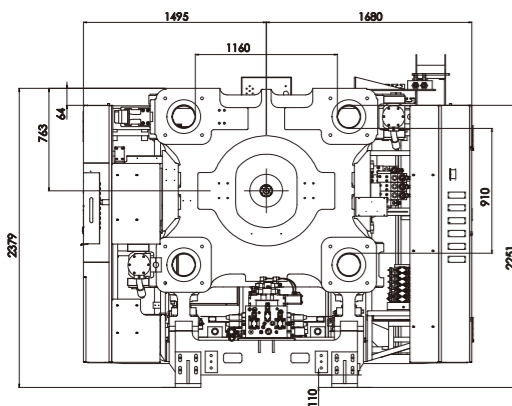
▼ Dimensions of moving platen



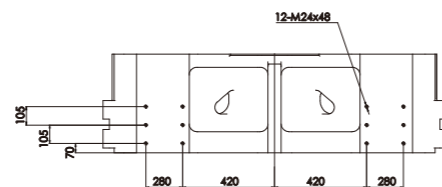
▼ main view



▼ Robot installation dimensions



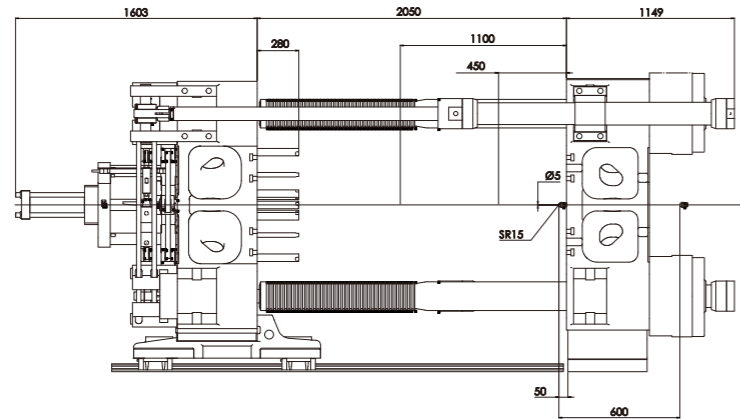
▼ Robot installation dimensions on stationary platen



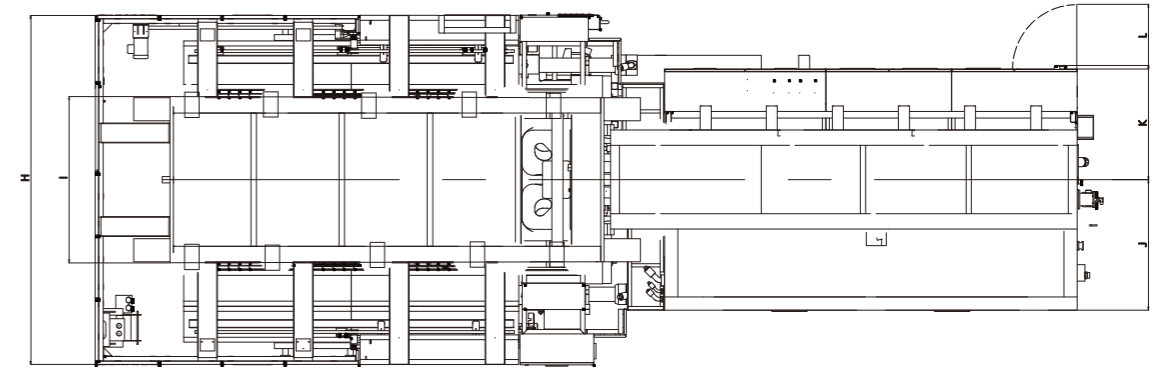
MODEL	A	B	C	D	E	F	G	H	I	J	K	L
BL850DK-W	2718	2379	2301	3096	1616	4649	4500	3185	1490	1184	1038	565

Platen Dimensions & Machine Dimensions

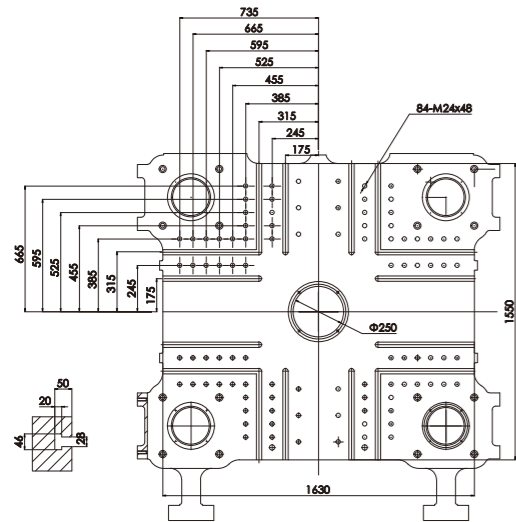
▼ Clamping unit



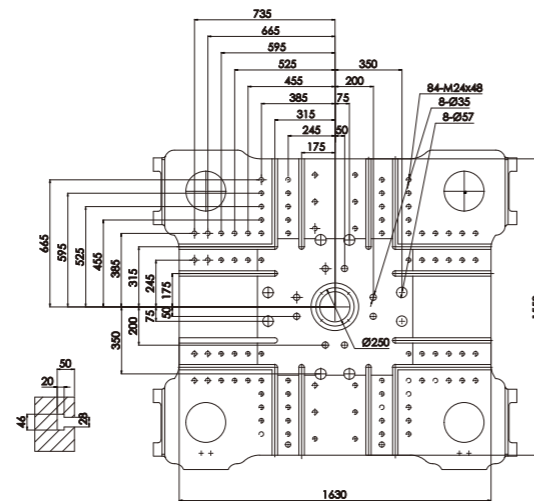
▼ upward view



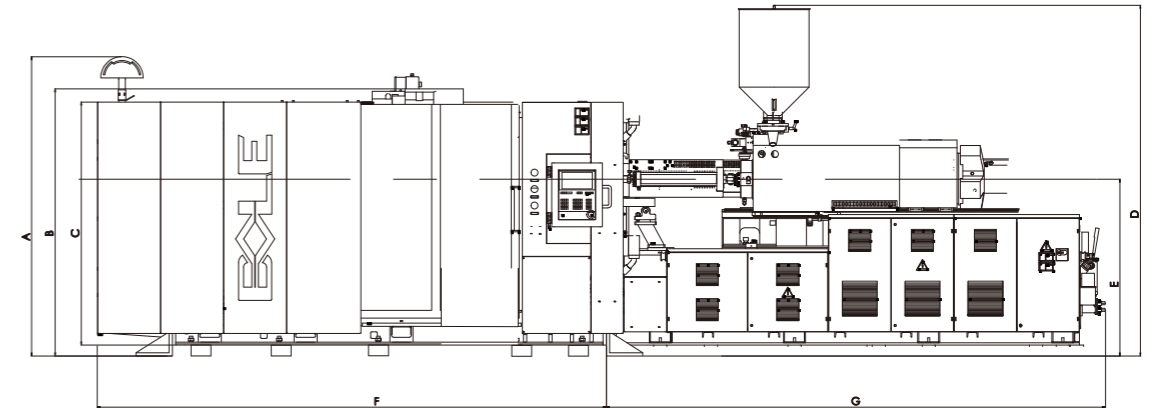
▼ Dimensions of stationary platen



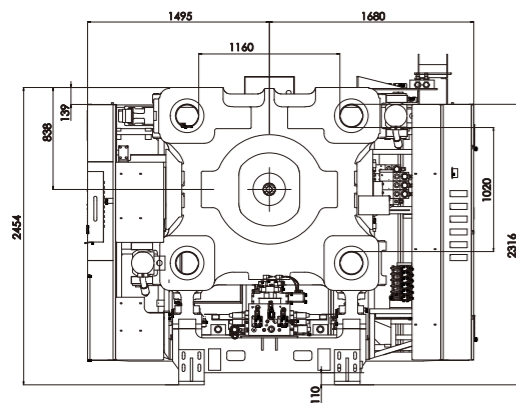
▼ Dimensions of moving platen



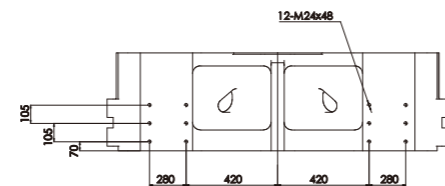
▼ main view



▼ Robot installation dimensions



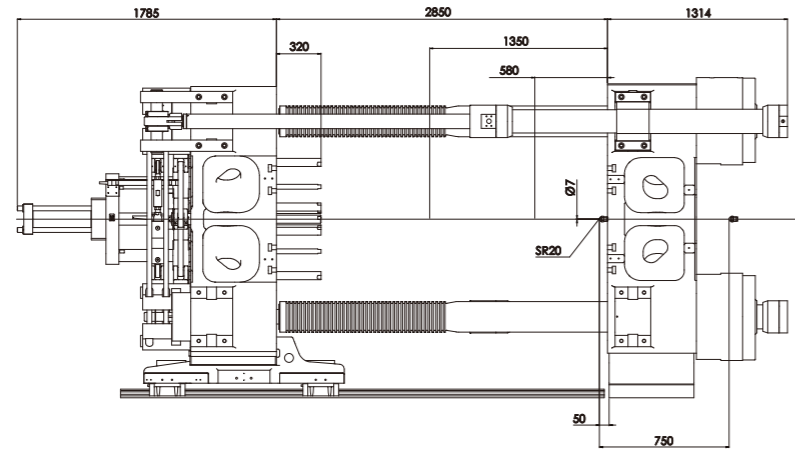
▼ Robot installation dimensions on stationary platen



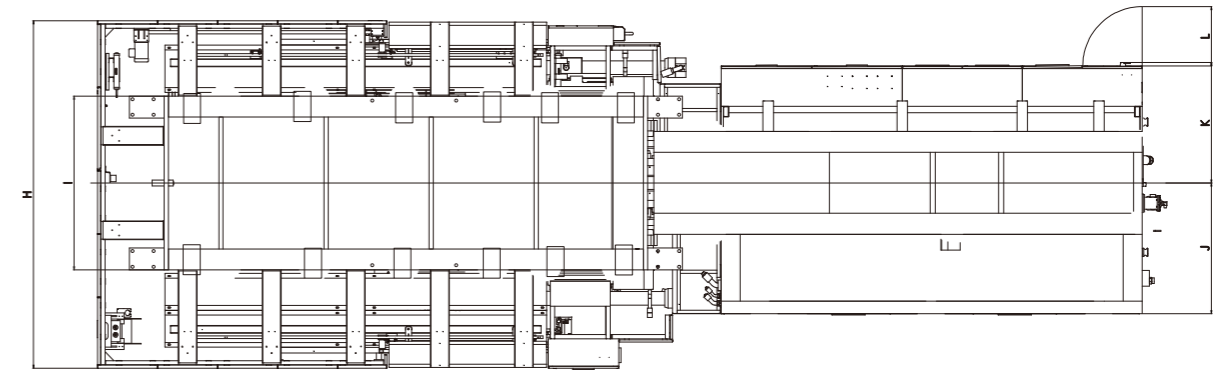
MODEL	A	B	C	D	E	F	G	H	I	J	K	L
BL1000DK	2718	2444	2301	3096	1616	4649	4500	3185	1490	1184	1038	565

Platen Dimensions & Machine Dimensions

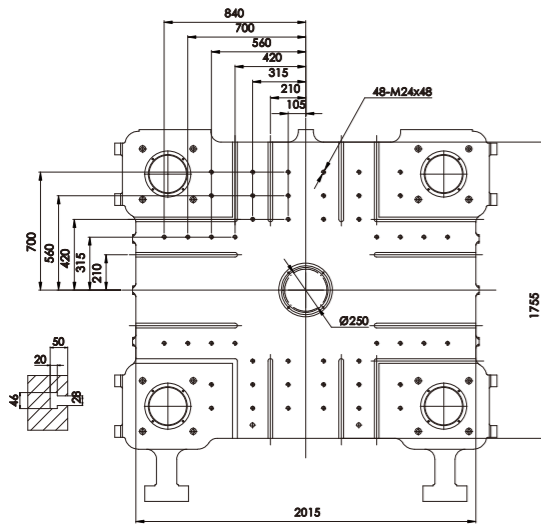
▼ Clamping unit



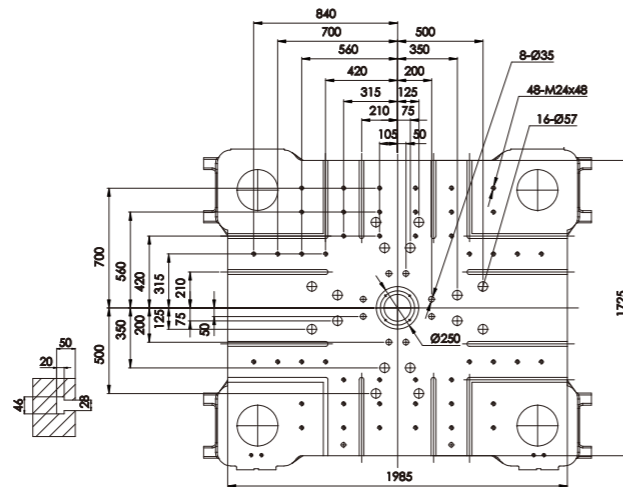
▼ upward view



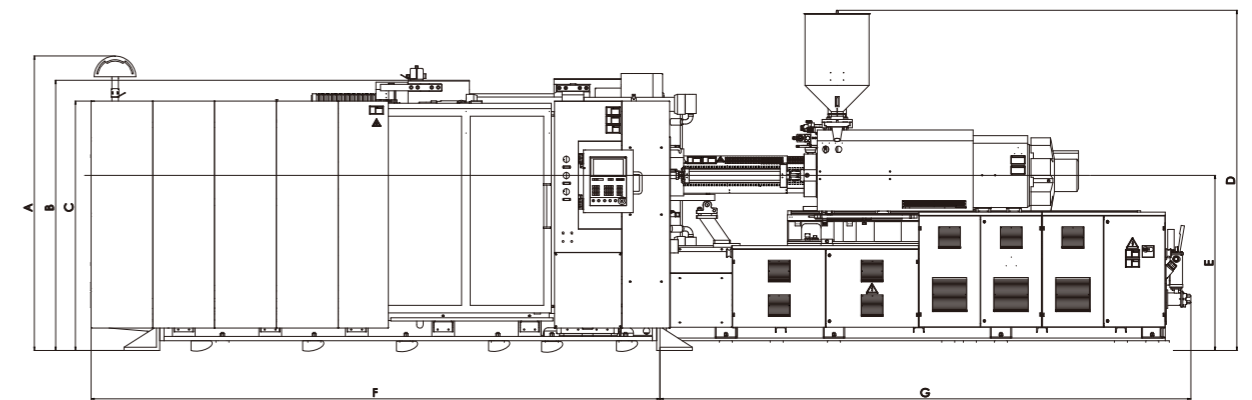
▼ Dimensions of stationary platen



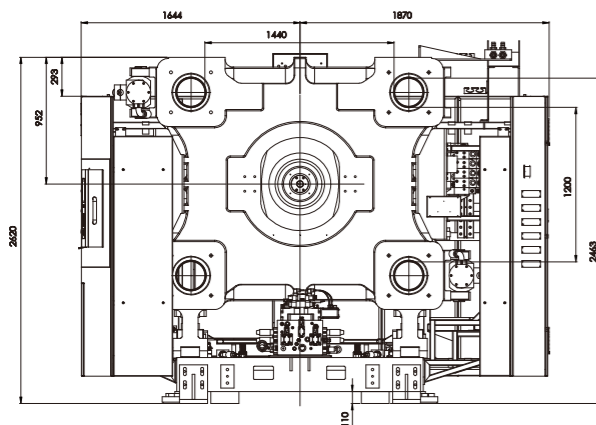
▼ Dimensions of moving platen



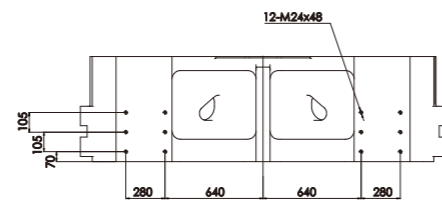
▼ main view



▼ Robot installation dimensions



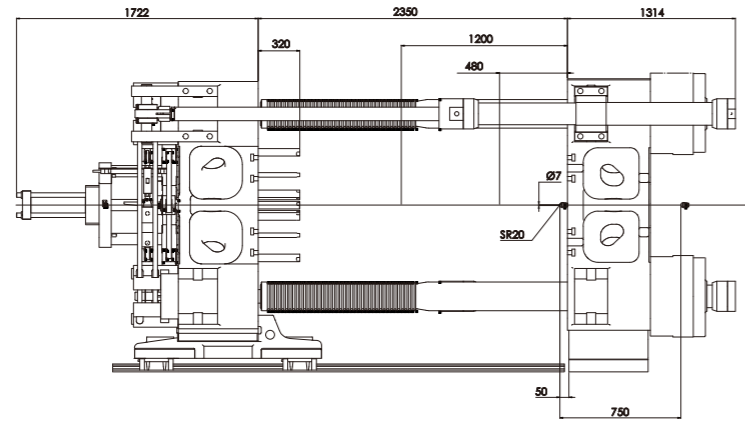
▼ Robot installation dimensions on stationary platen



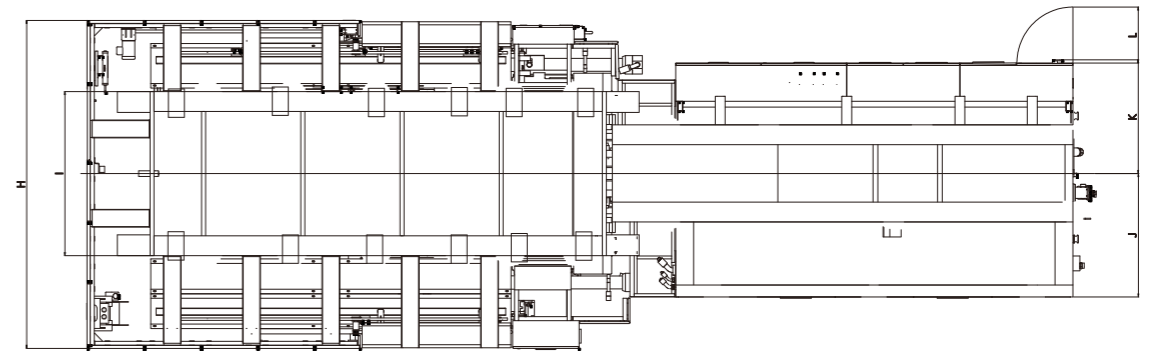
MODEL	A	B	C	D	E	F	G	H	I	J	K	L
BL1050DK-W	2743	2597	2327	3157	1668	5868	4912	3514	1850	1244	1148	564

Platen Dimensions & Machine Dimensions

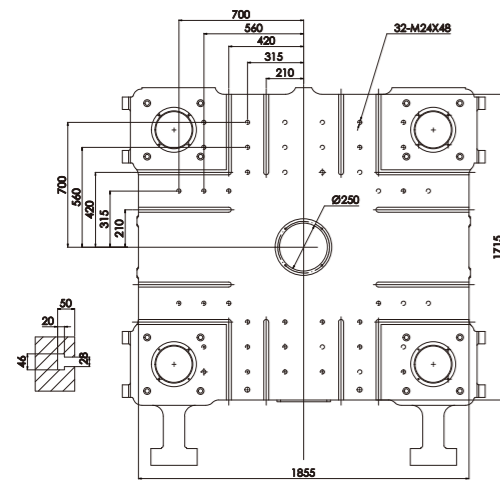
Clamping unit



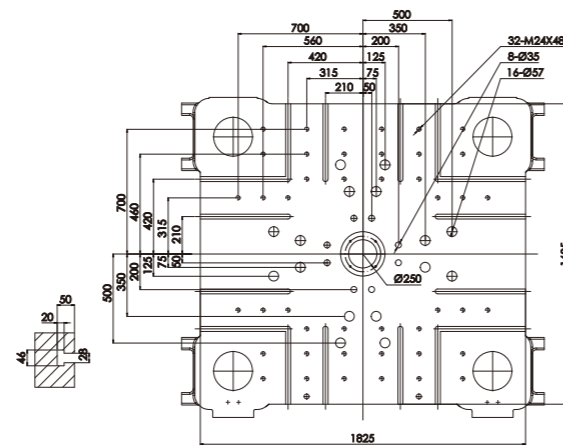
upward view



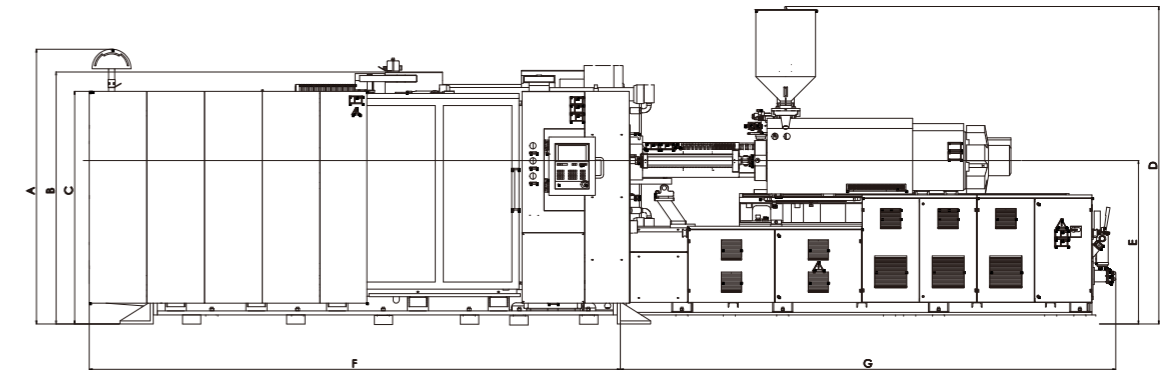
Dimensions of stationary platen



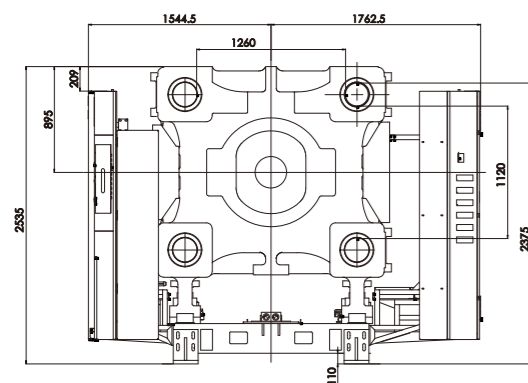
Dimensions of moving platen



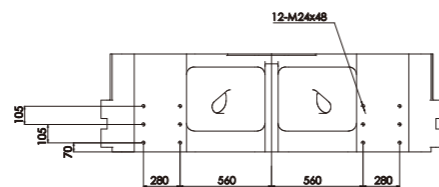
main view



Robot installation dimensions



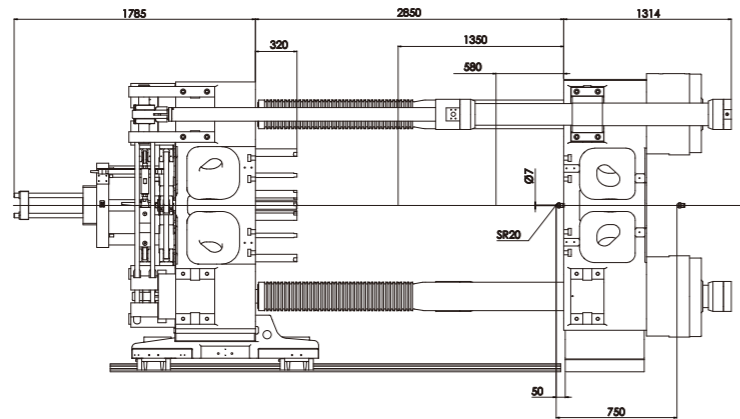
Robot installation dimensions on stationary platen



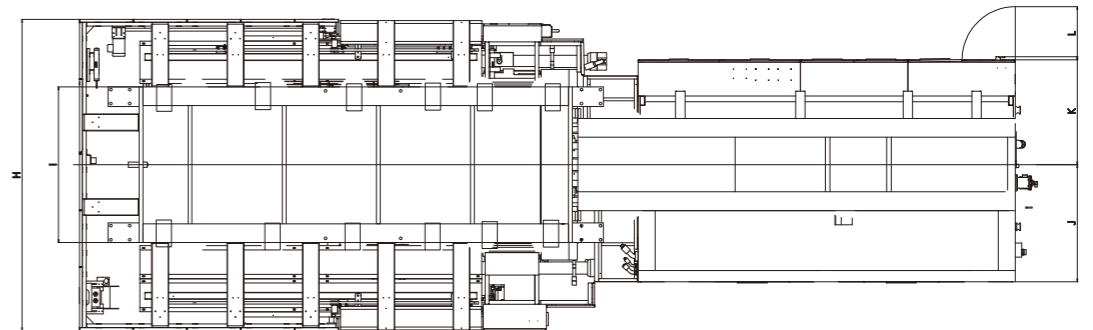
MODEL	A	B	C	D	E	F	G	H	I	J	K	L
BL1100DK	2744	2535	2327	3147	1640	5265	4912	3307	1655	1244	1148	564

Platen Dimensions & Machine Dimensions

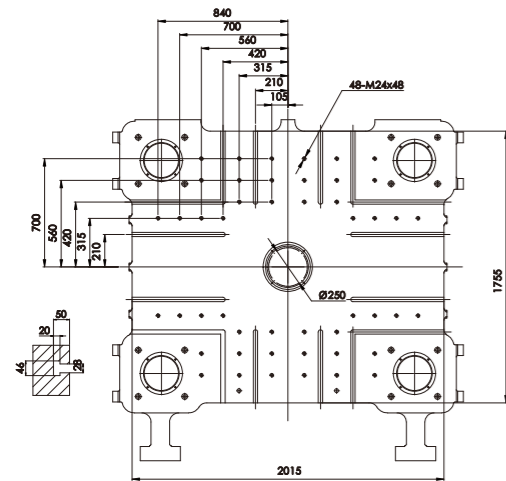
Clamping unit



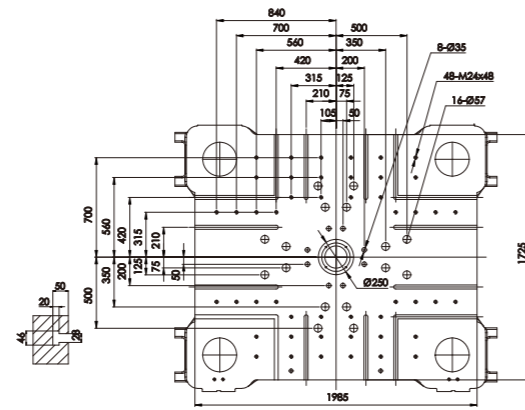
upward view



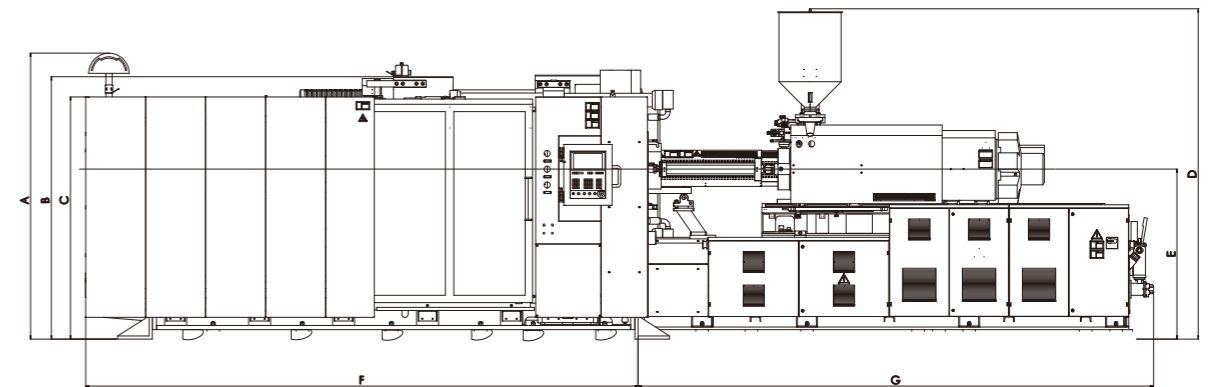
Dimensions of stationary platen



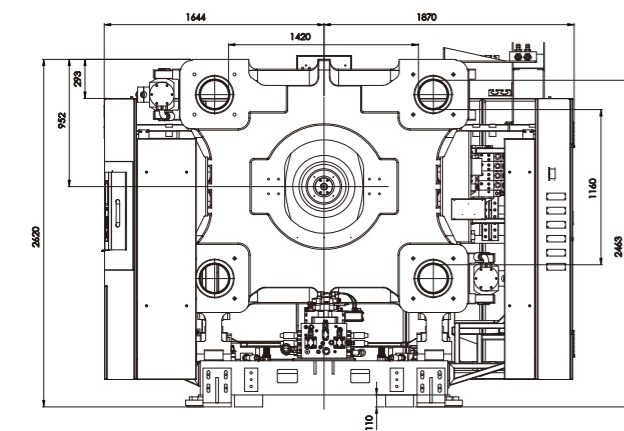
Dimensions of moving platen



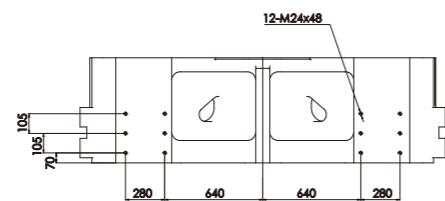
main view



Robot installation dimensions



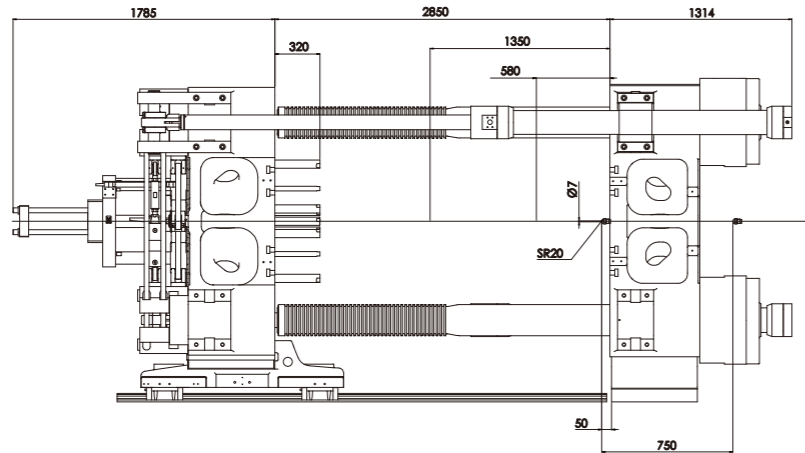
Robot installation dimensions on stationary platen



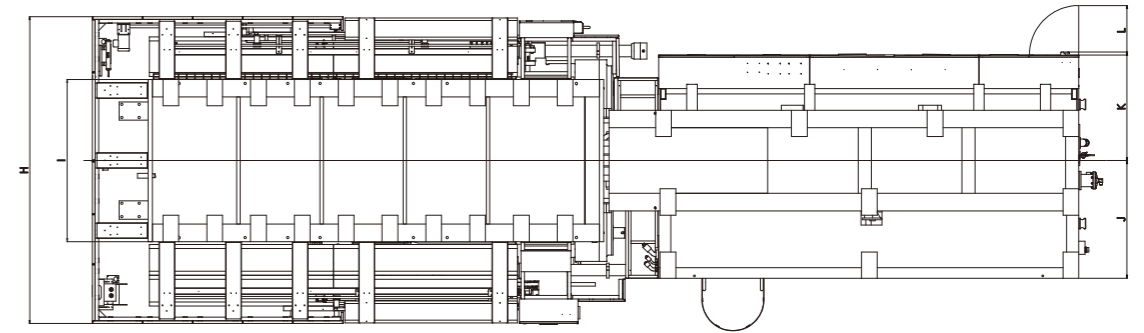
MODEL	A	B	C	D	E	F	G	H	I	J	K	L
BL1200DK-W	2743	2597	2327	3157	1668	5868	4912	3514	1850	1244	1148	564

Platen Dimensions & Machine Dimensions

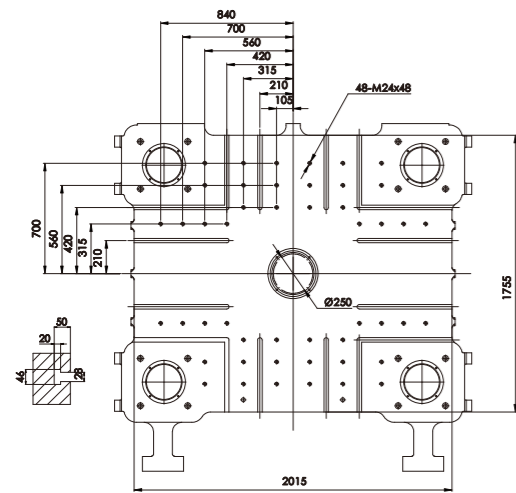
▼ Clamping unit



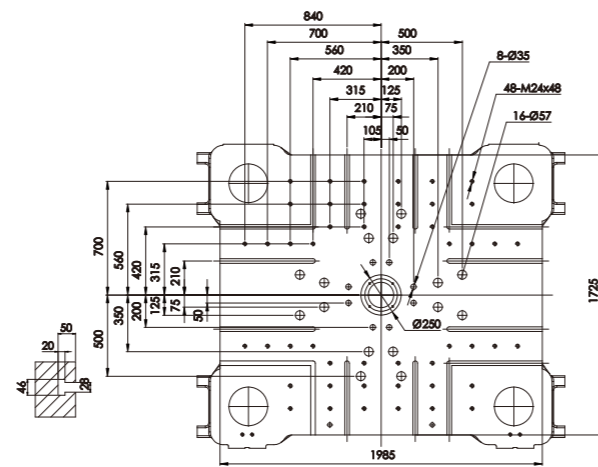
▼ upward view



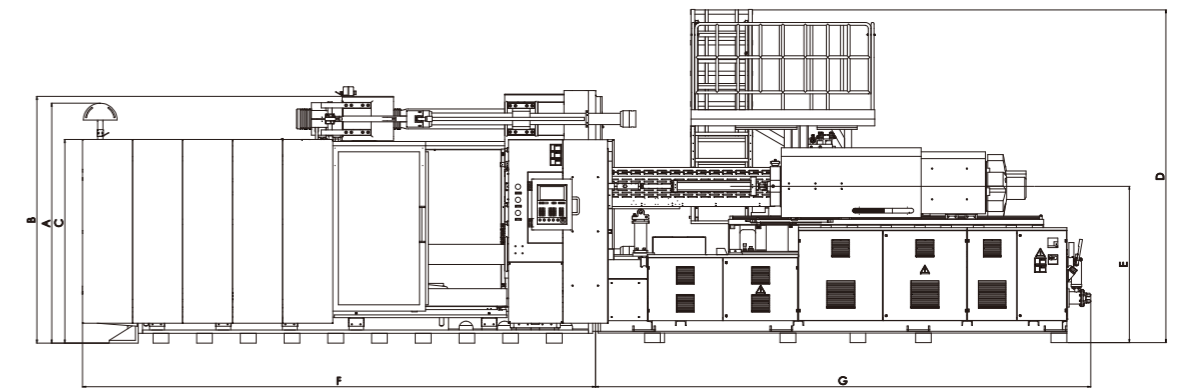
▼ Dimensions of stationary platen



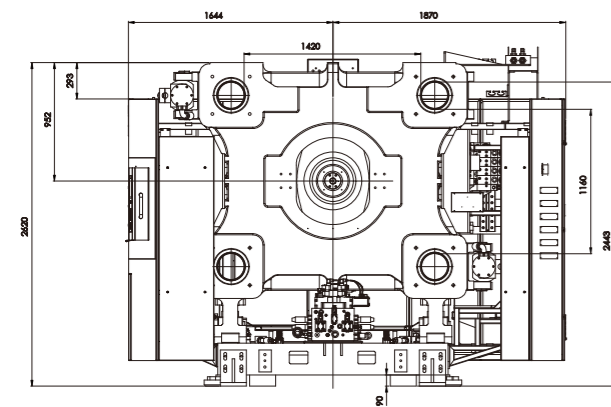
▼ Dimensions of moving platen



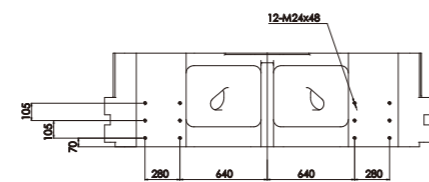
▼ main view



▼ Robot installation dimensions



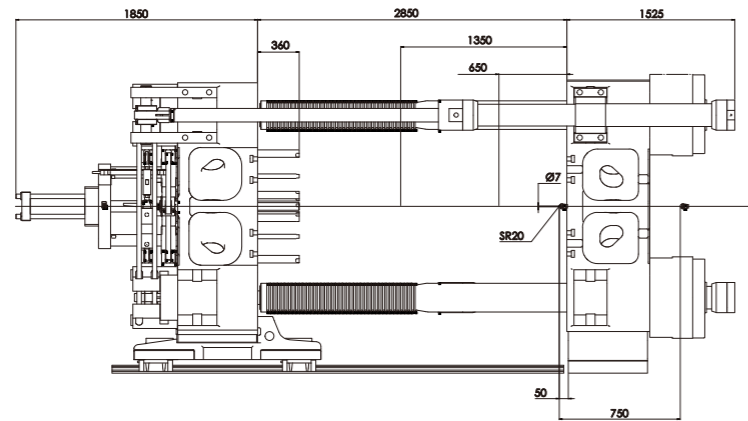
▼ Robot installation dimensions on stationary platen



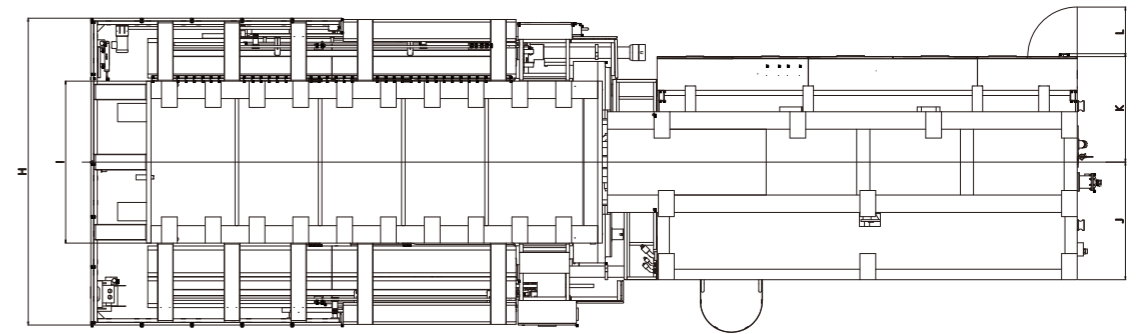
MODEL	A	B	C	D	E	F	G	H	I	J	K	L
BL1300DK-W	2743	2597	2327	3632	1668	5868	4912	3514	1850	1244	1148	564

Platen Dimensions & Machine Dimensions

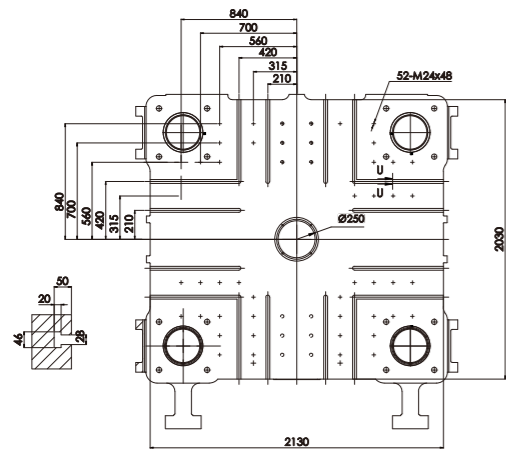
▼ Clamping unit



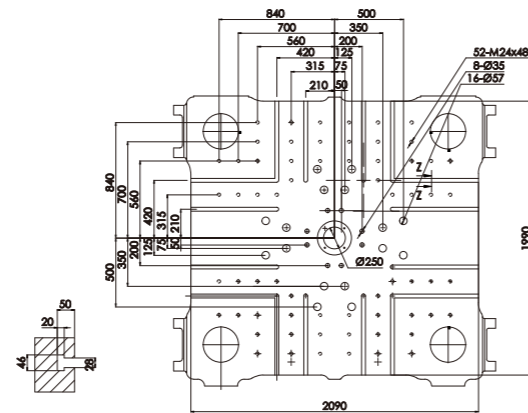
▼ upward view



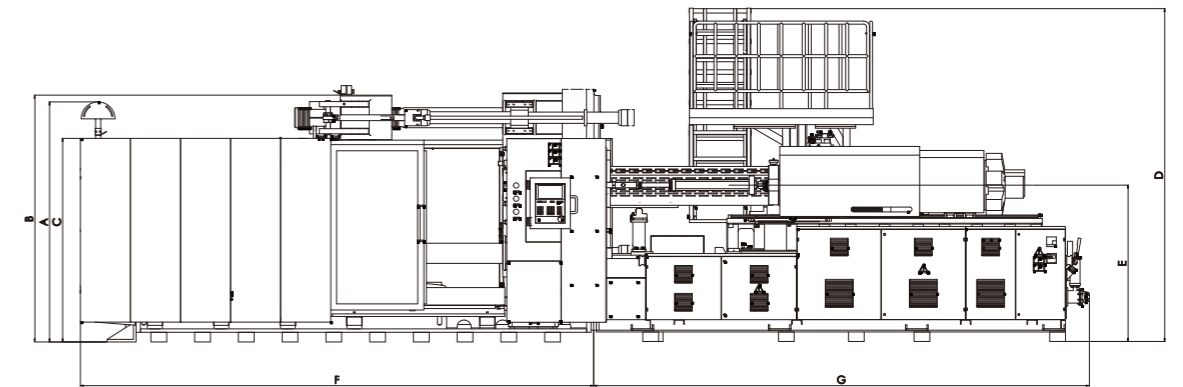
▼ Dimensions of stationary platen



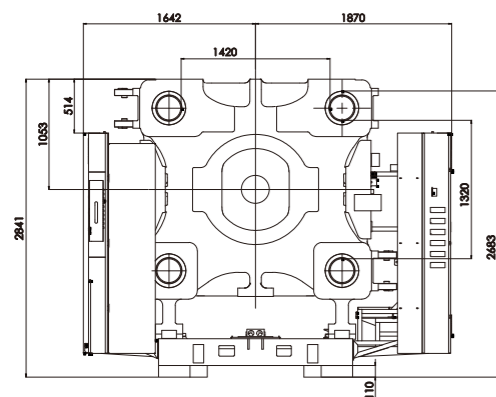
▼ Dimensions of moving platen



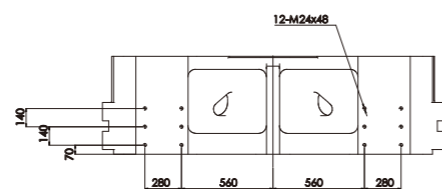
▼ main view



▼ Robot installation dimensions



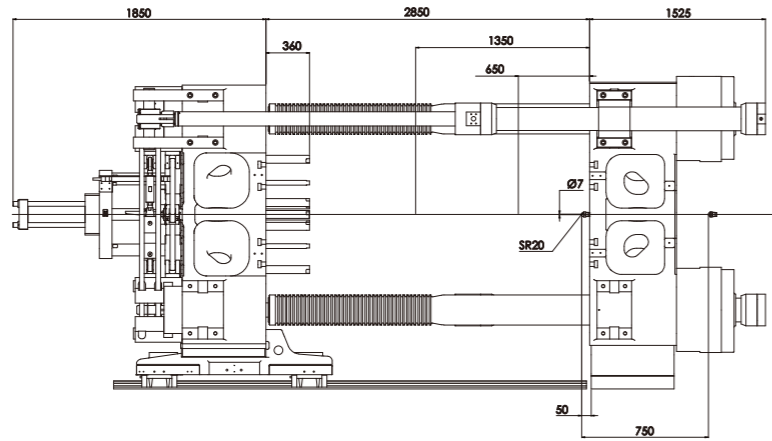
▼ Robot installation dimensions on stationary platen



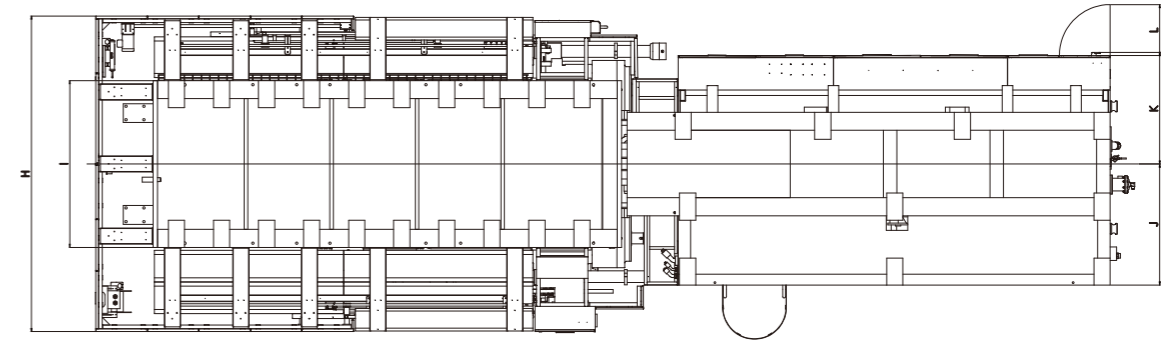
MODEL	A	B	C	D	E	F	G	H	I	J	K	L
BL1400DK	2743	2841	2327	3805	1788	5866	5665	3502	1850	1343	1238	564

Platen Dimensions & Machine Dimensions

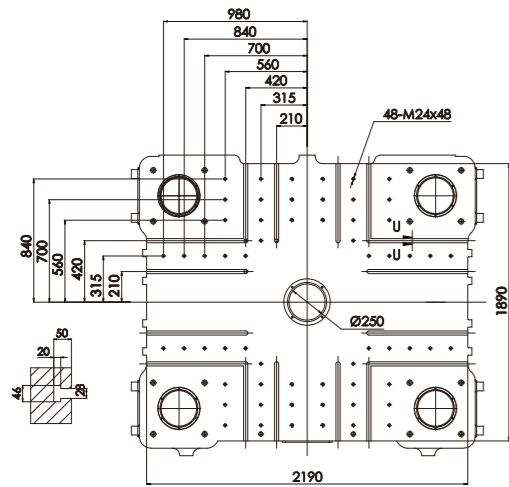
Clamping unit



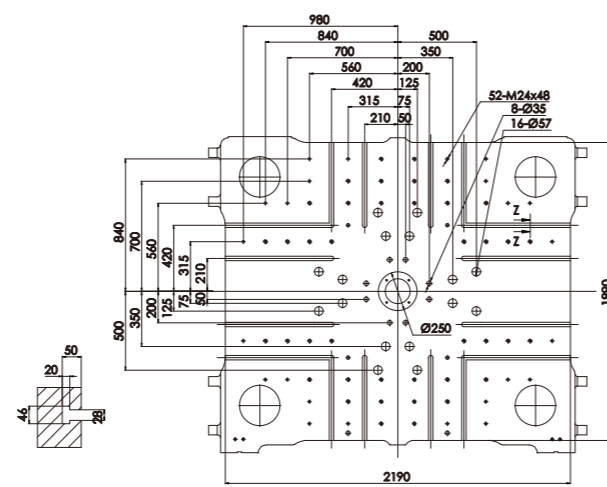
upward view



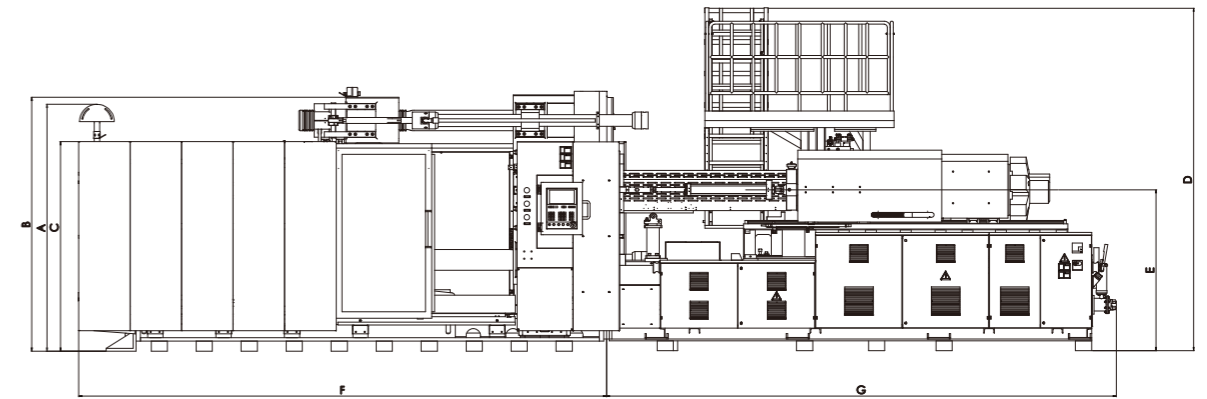
Dimensions of stationary platen



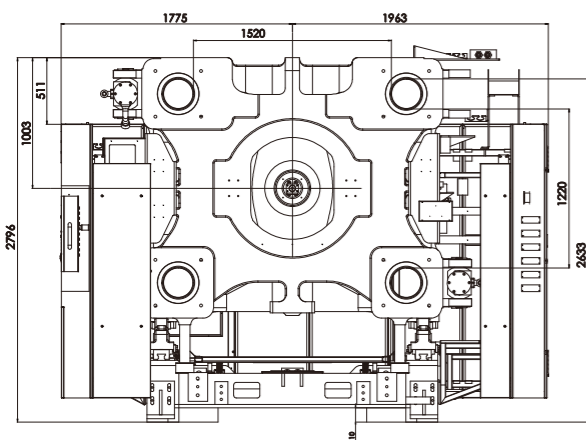
Dimensions of moving platen



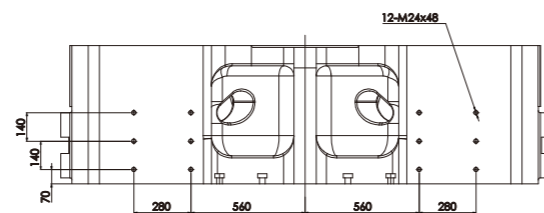
main view



Robot installation dimensions



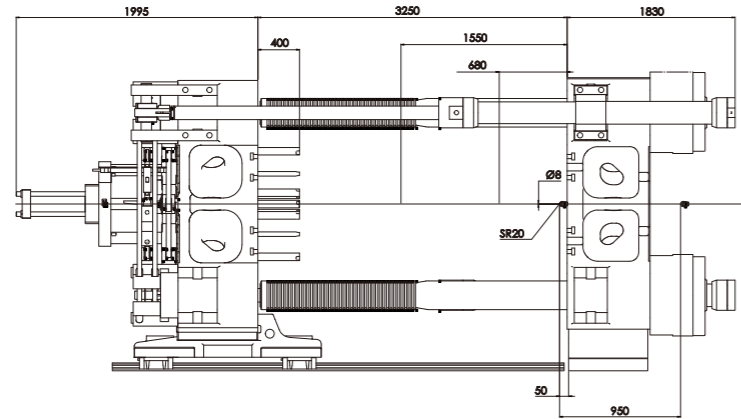
Robot installation dimensions on stationary platen



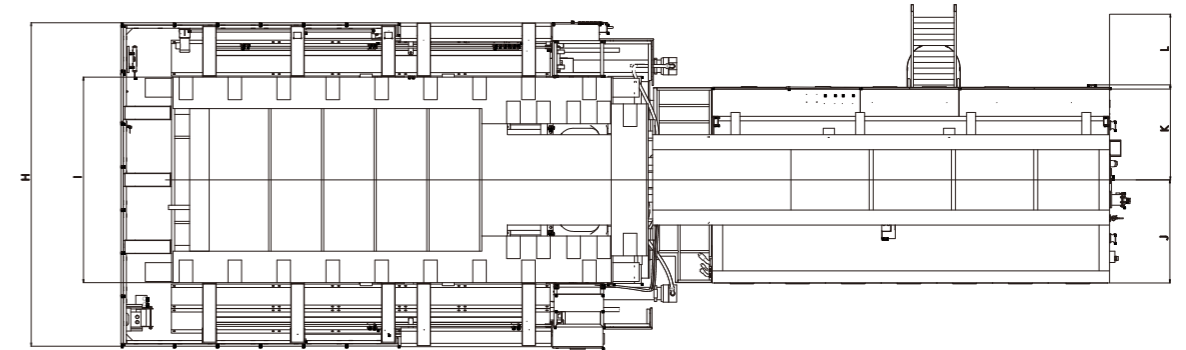
MODEL	A	B	C	D	E	F	G	H	I	J	K	L
BL1500DK-W	2702	2776	2286	3815	1783	5853	5665	3738	2230	1343	1238	564

Platen Dimensions & Machine Dimensions

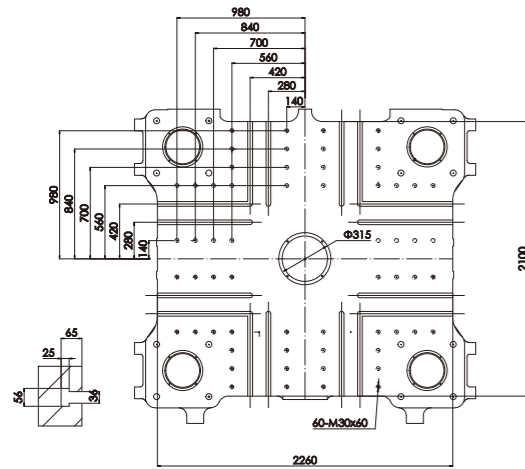
▼ Clamping unit



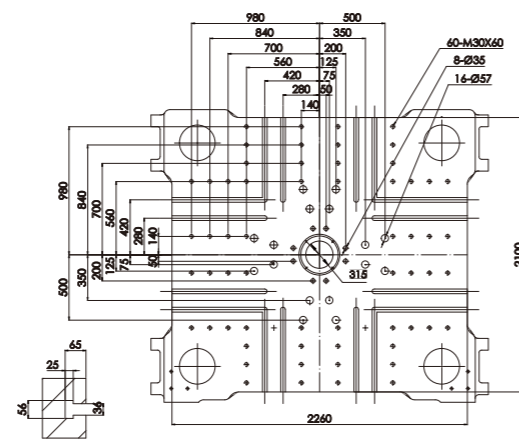
▼ upward view



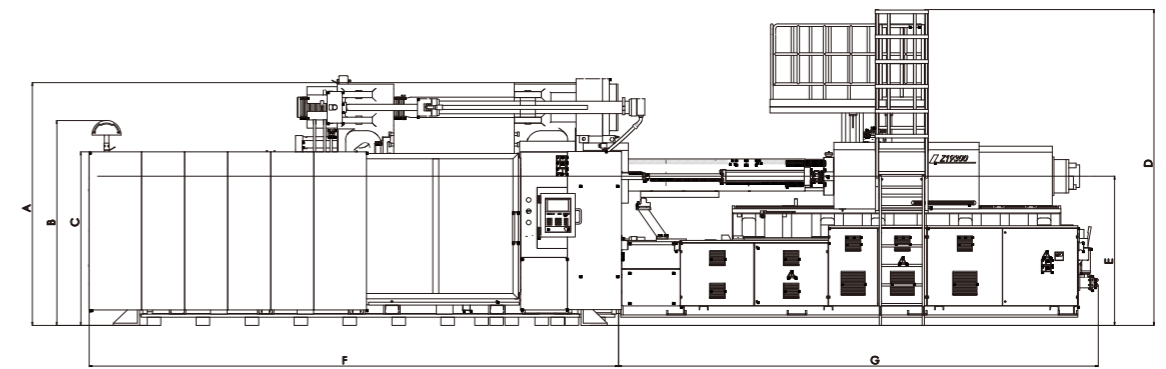
▼ Dimensions of stationary platen



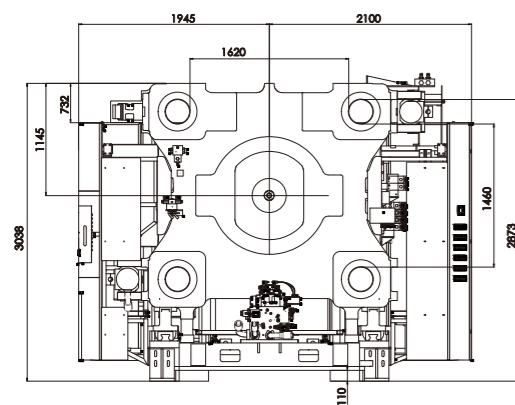
▼ Dimensions of moving platen



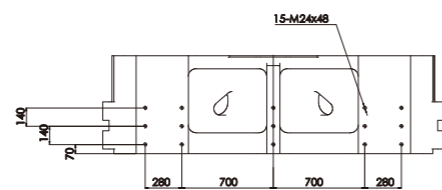
▼ main view



▼ Robot installation dimensions



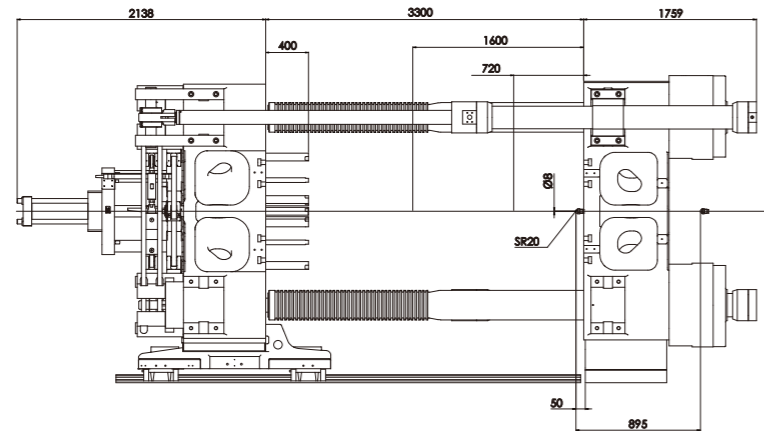
▼ Robot installation dimensions on stationary platen



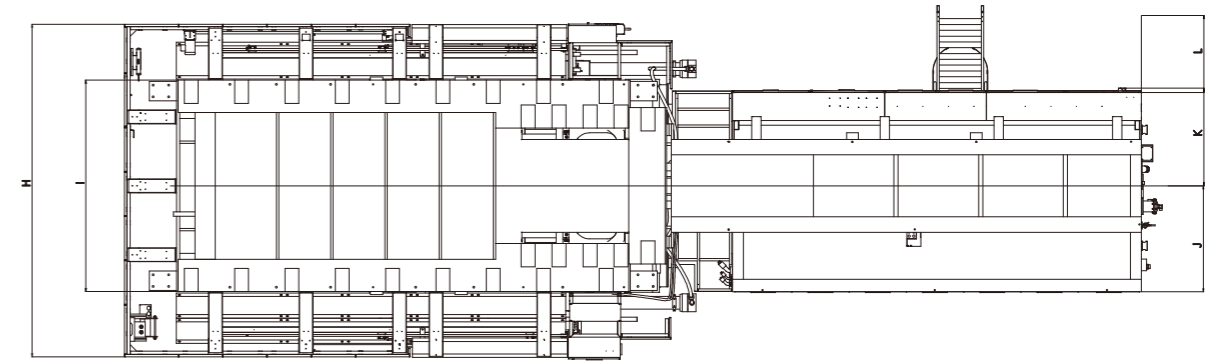
MODEL	A	B	C	D	E	F	G	H	I	J	K	L
BL1700DK	3038	2723	2306	4196	1982	6852	6375	4045	2440	1368	1263	995

Platen Dimensions & Machine Dimensions

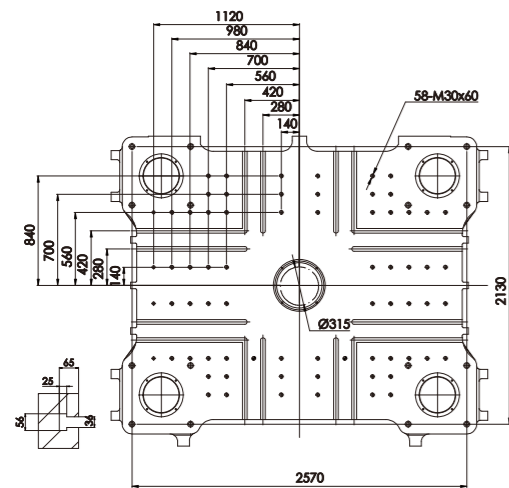
▼ Clamping unit



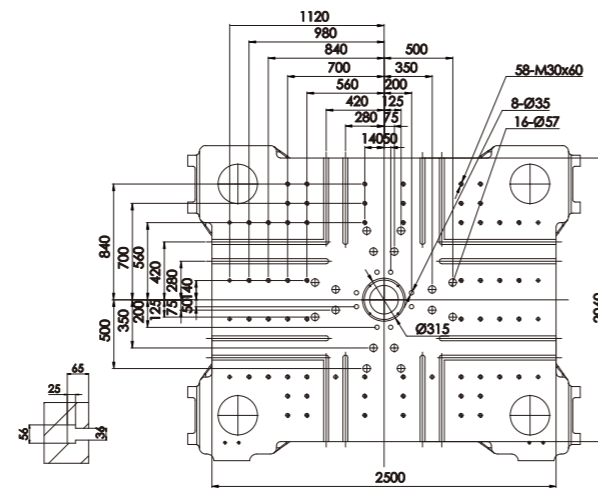
▼ upward view



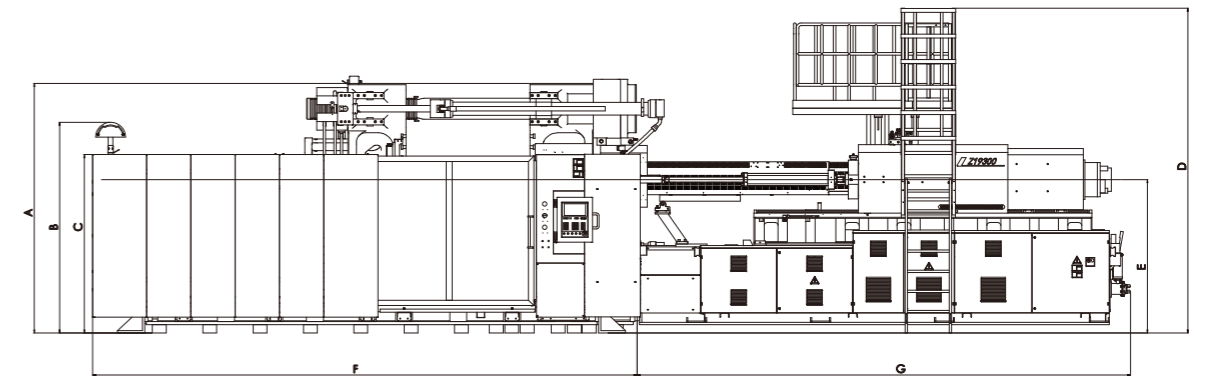
▼ Dimensions of stationary platen



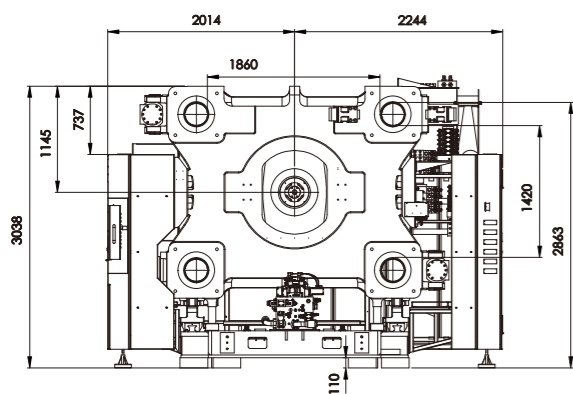
▼ Dimensions of moving platen



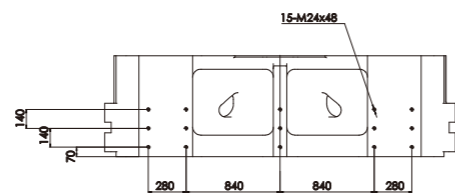
▼ main view



▼ Robot installation dimensions



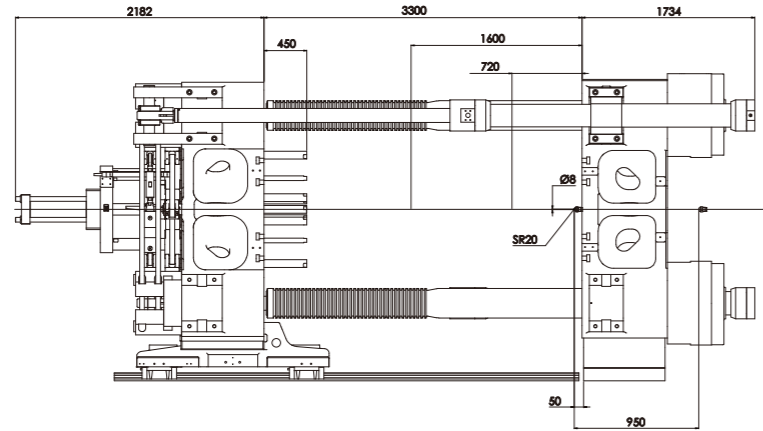
▼ Robot installation dimensions on stationary platen



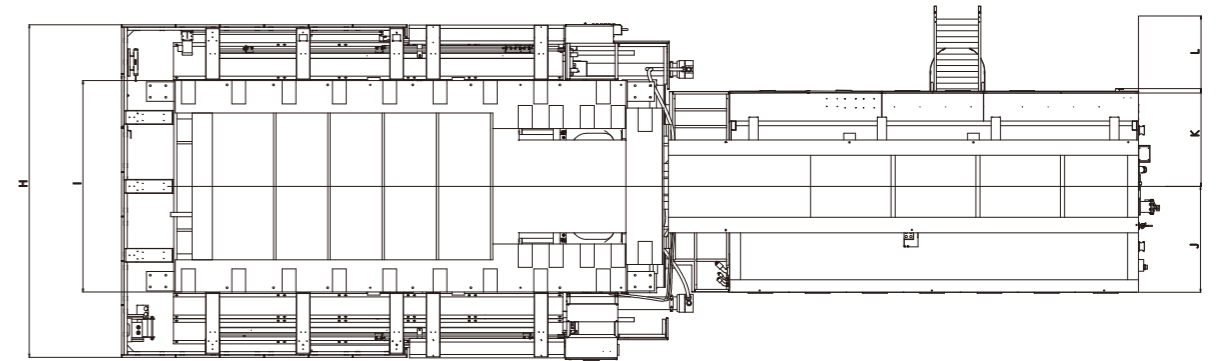
MODEL	A	B	C	D	E	F	G	H	I	J	K	L
BL1850DK-W	3038	2827	2301	4107	1893	6870	6373	4258	2450	1368	1262.5	995

Platen Dimensions & Machine Dimensions

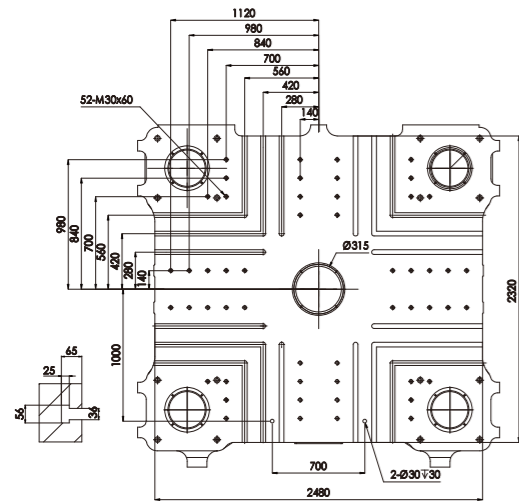
Clamping unit



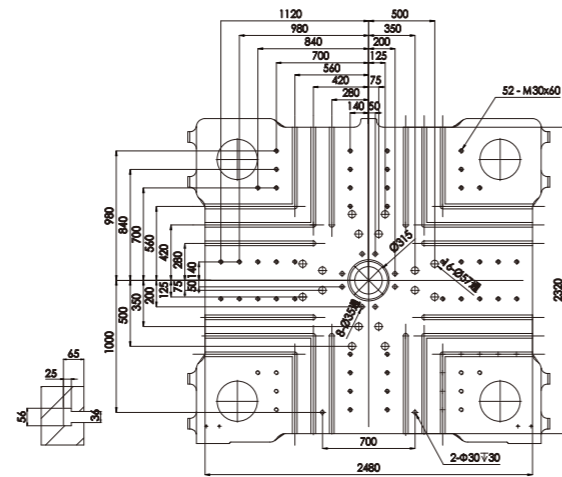
upward view



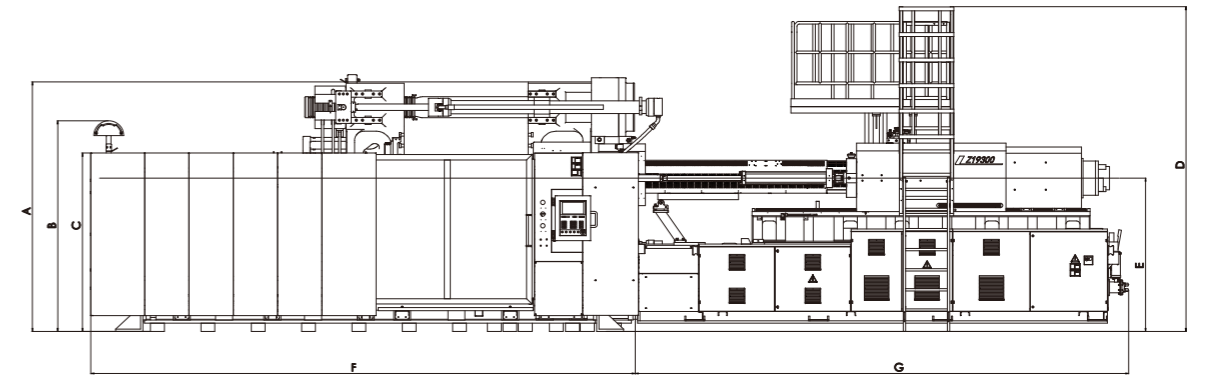
Dimensions of stationary platen



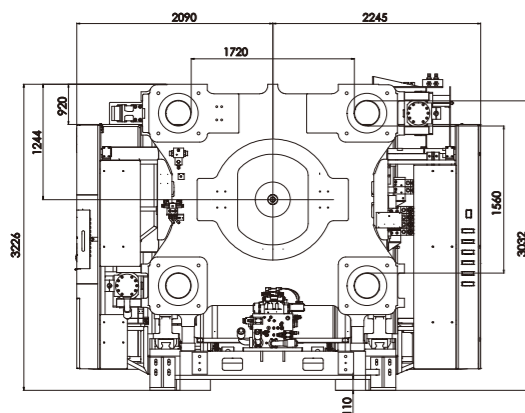
Dimensions of moving platen



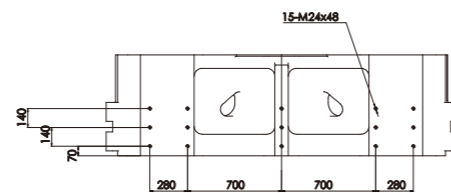
main view



Robot installation dimensions



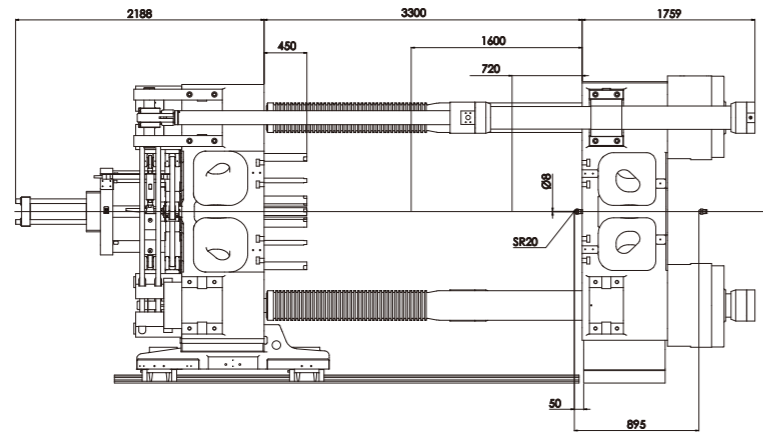
Robot installation dimensions on stationary platen



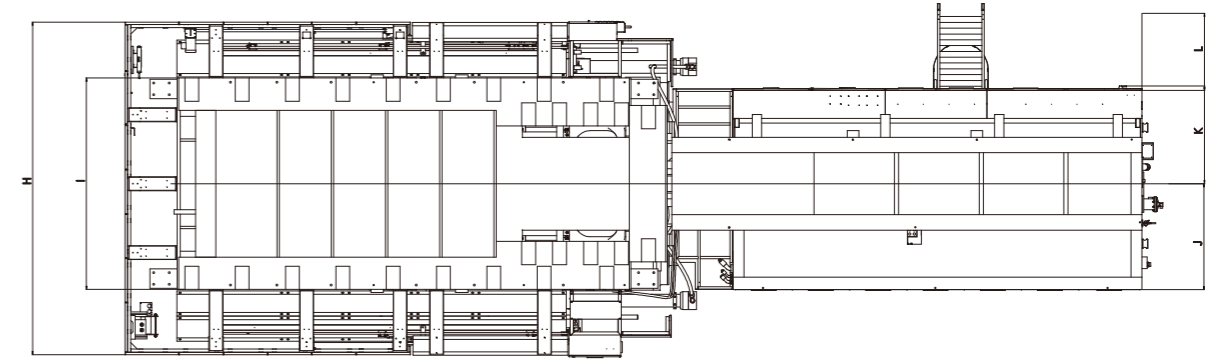
MODEL	A	B	C	D	E	F	G	H	I	J	K	L
BL2000DK	3226	2723	2306	4196	1982	7031	6375	4335	2730	1368	1263	995

Platen Dimensions & Machine Dimensions

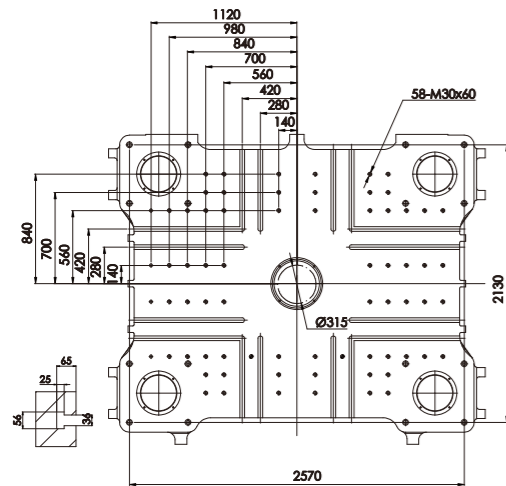
▼ Clamping unit



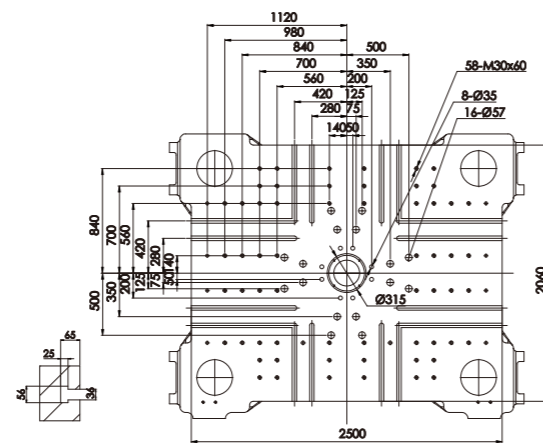
▼ upward view



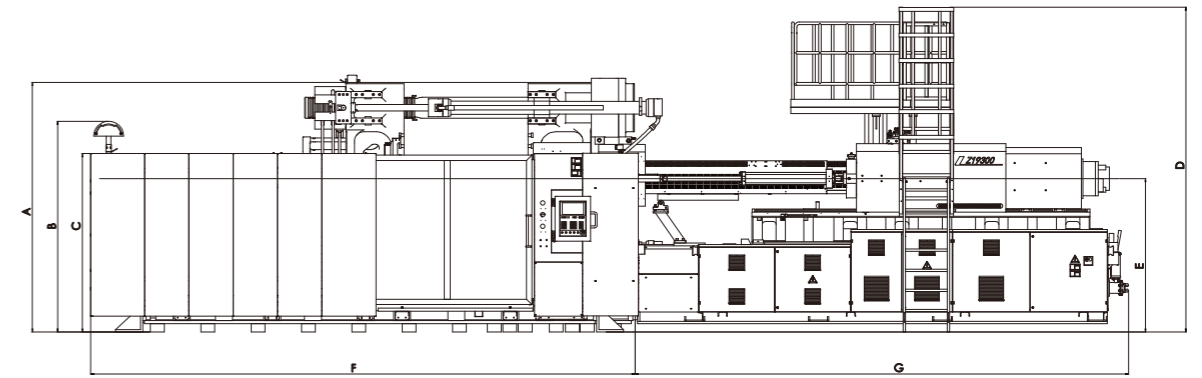
▼ Dimensions of stationary platen



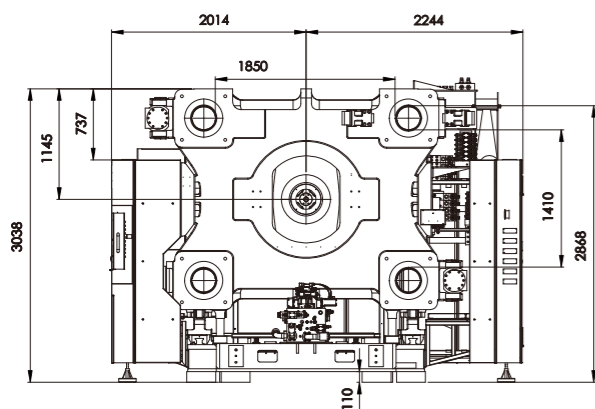
▼ Dimensions of moving platen



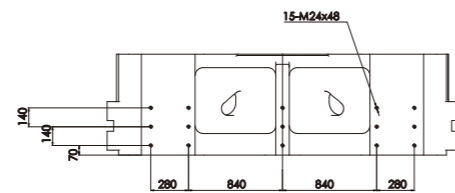
▼ main view



▼ Robot installation dimensions



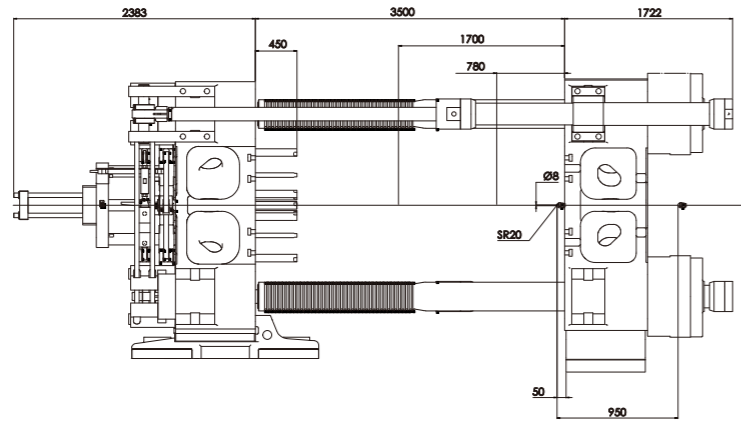
▼ Robot installation dimensions on stationary platen



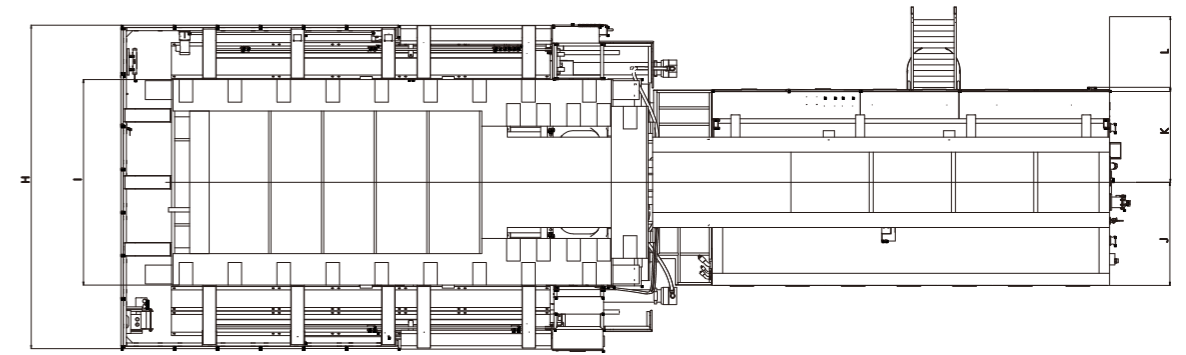
MODEL	A	B	C	D	E	F	G	H	I	J	K	L
BL2100DK-W	3038	2827	2301	4107	1893	6870	6373	4258	2450	1368	1262.5	995

Platen Dimensions & Machine Dimensions

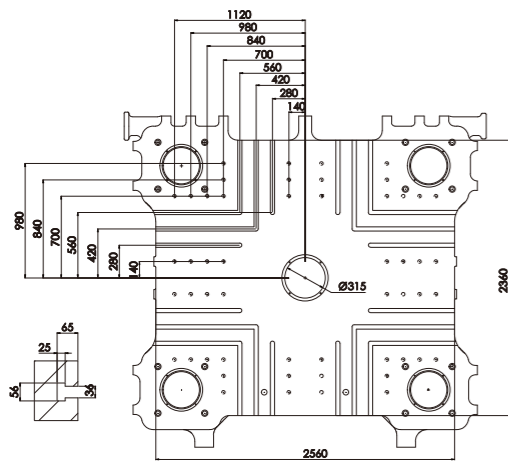
▼ Clamping unit



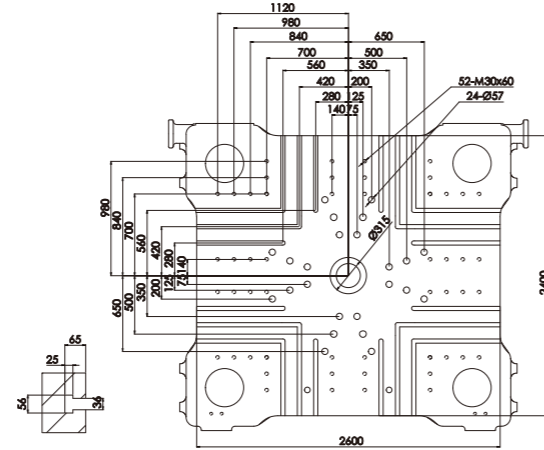
▼ upward view



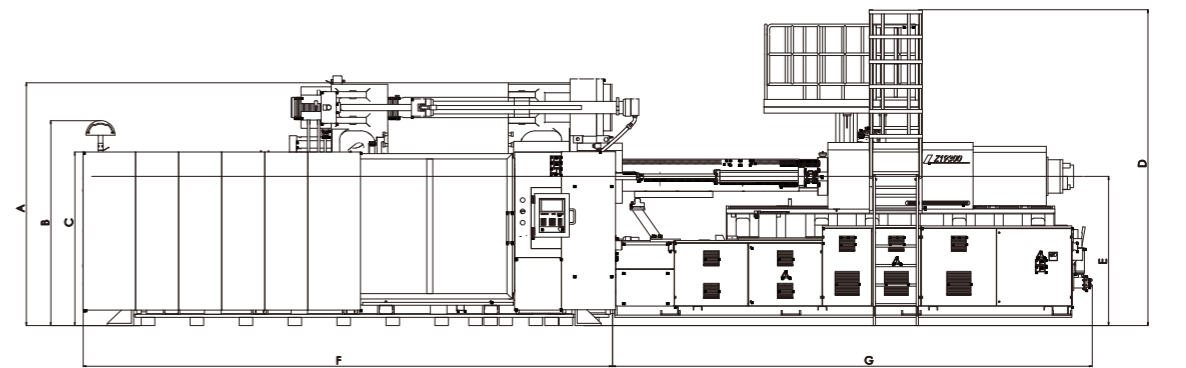
▼ Dimensions of stationary platen



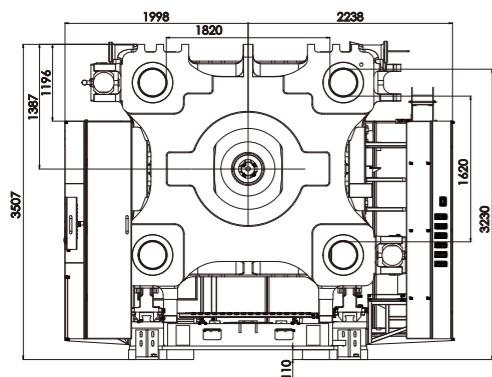
▼ Dimensions of moving platen



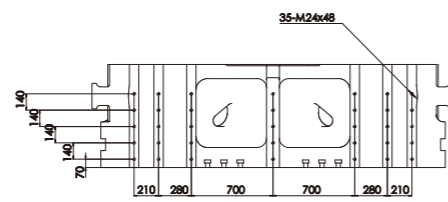
▼ main view



▼ Robot installation dimensions



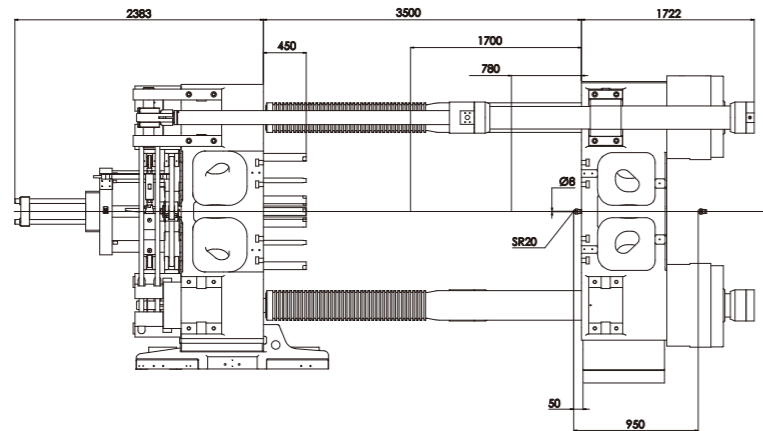
▼ Robot installation dimensions on stationary platen



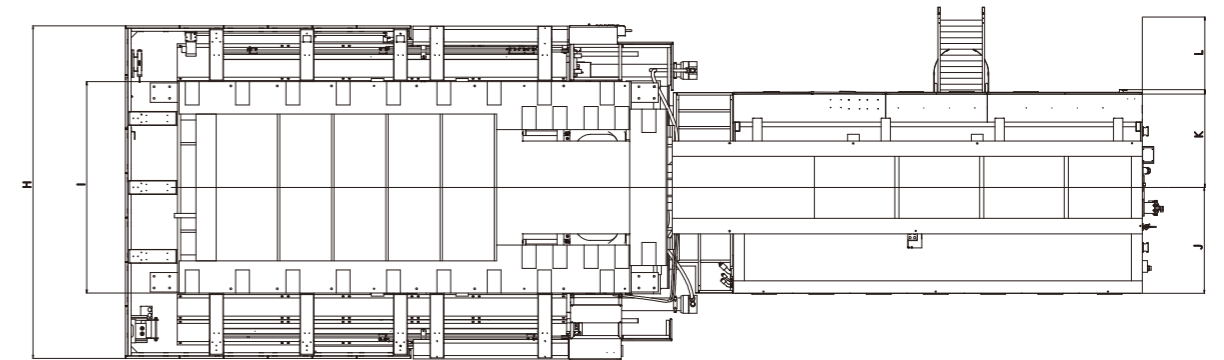
MODEL	A	B	C	D	E	F	G	H	I	J	K	L
BL2300DK	3424	2728	2311	4194	2120	7492	7054	4240	2630	1480	1279	995

Platen Dimensions & Machine Dimensions

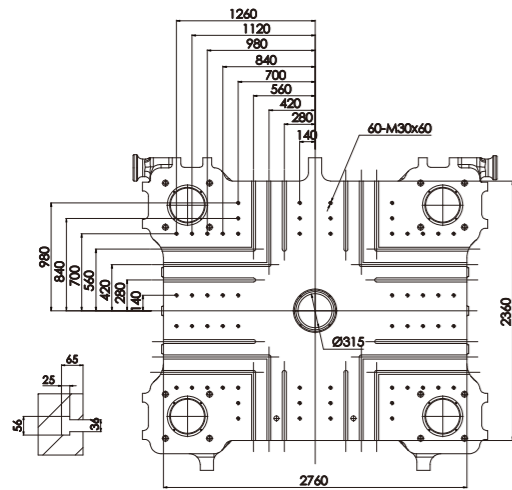
▼ Clamping unit



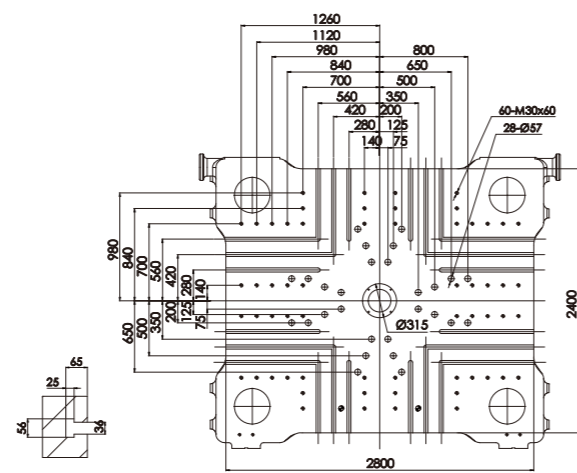
▼ upward view



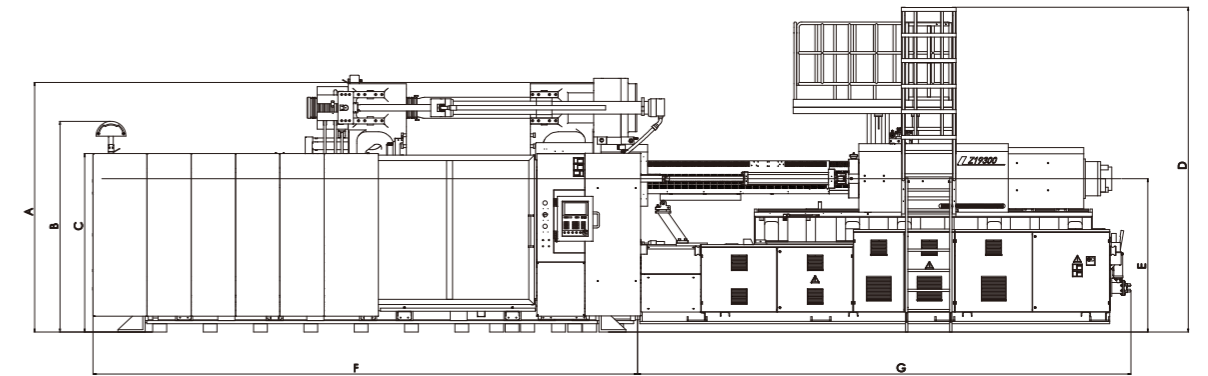
▼ Dimensions of stationary platen



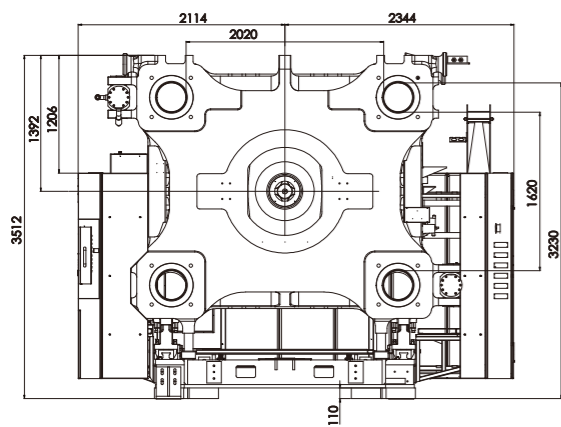
▼ Dimensions of moving platen



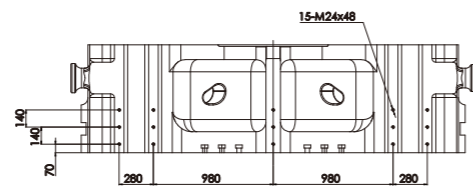
▼ main view



▼ Robot installation dimensions



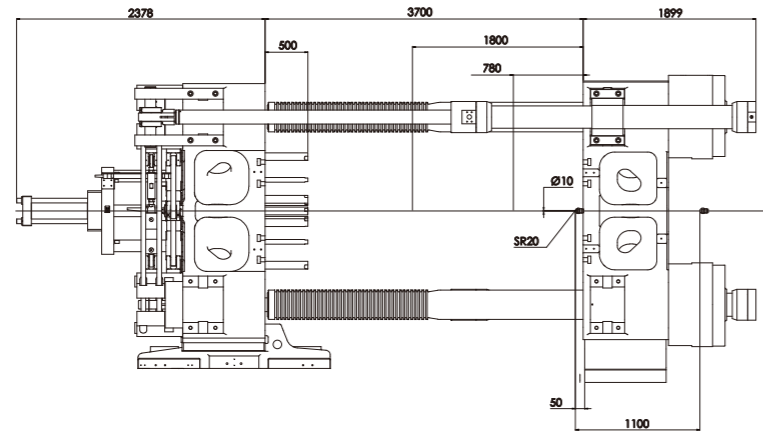
▼ Robot installation dimensions on stationary platen



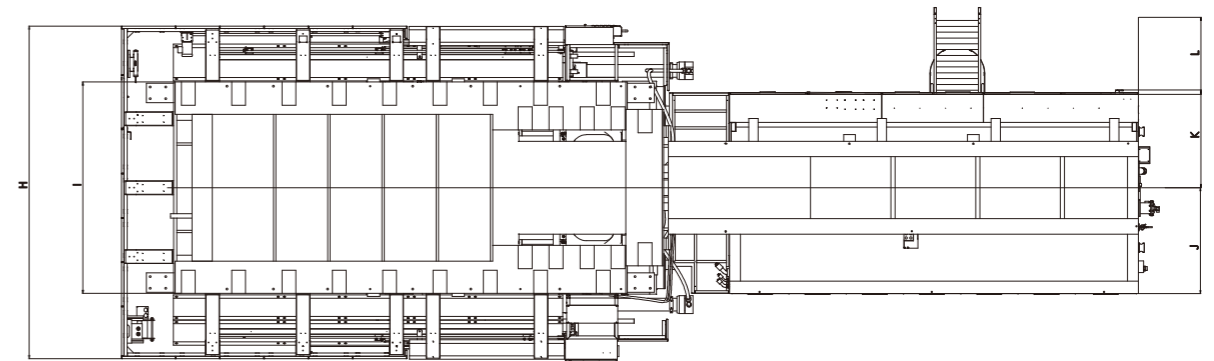
MODEL	A	B	C	D	E	F	G	H	I	J	K	L
BL2500DK-W	3512	3005	2306	4194	2120	7512	7054	4458	2650	1480	1279	995

Platen Dimensions & Machine Dimensions

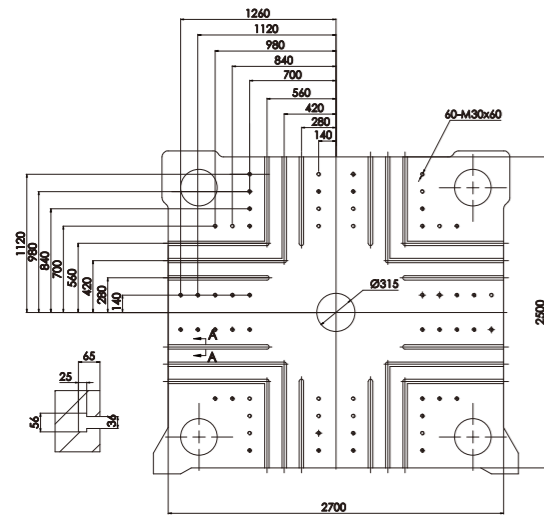
▼ Clamping unit



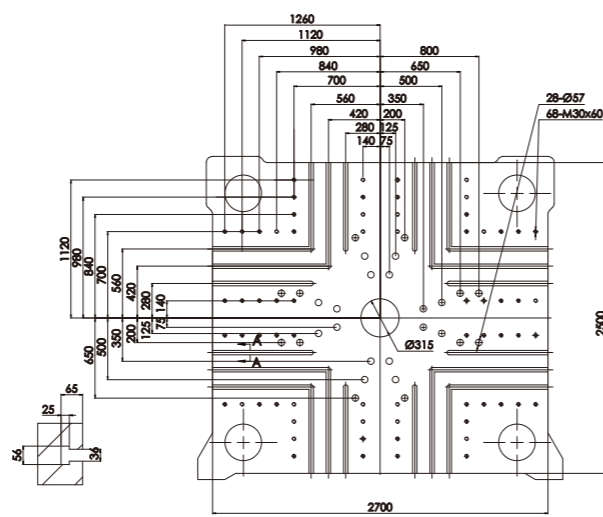
▼ upward view



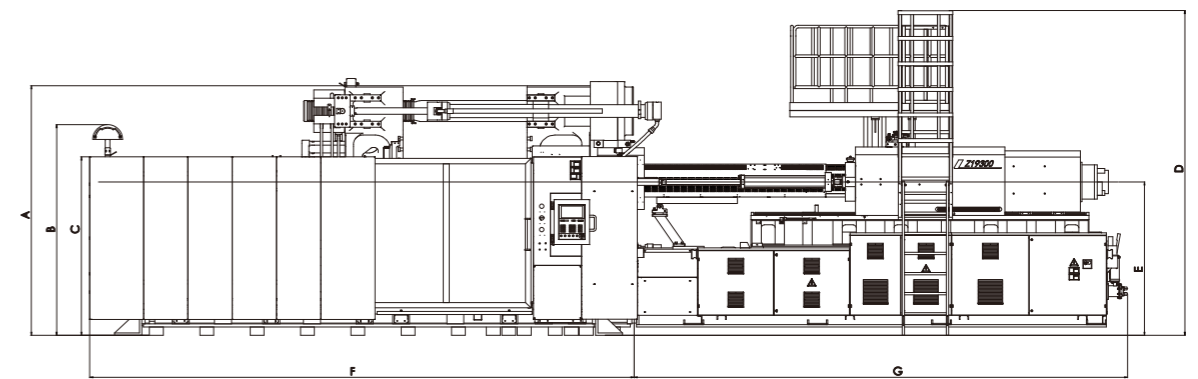
▼ Dimensions of stationary platen



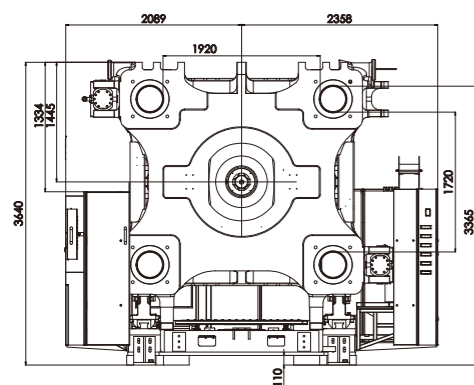
▼ Dimensions of moving platen



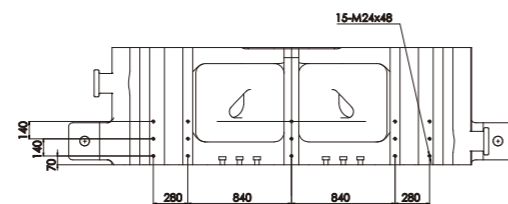
▼ main view



▼ Robot installation dimensions



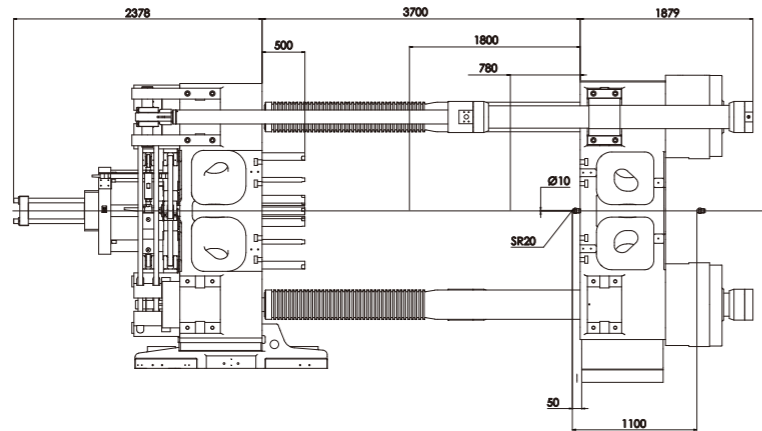
▼ Robot installation dimensions on stationary platen



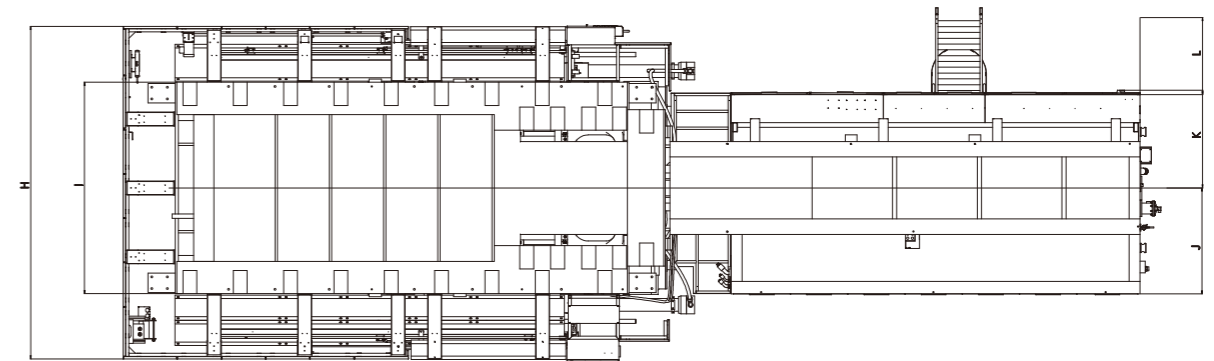
MODEL	A	B	C	D	E	F	G	H	I	J	K	L
BL2700DK	3640	2737	2306	4479	2195	7701	8278	4447	2610	1838	1545.5	773

Platen Dimensions & Machine Dimensions

▼ Clamping unit



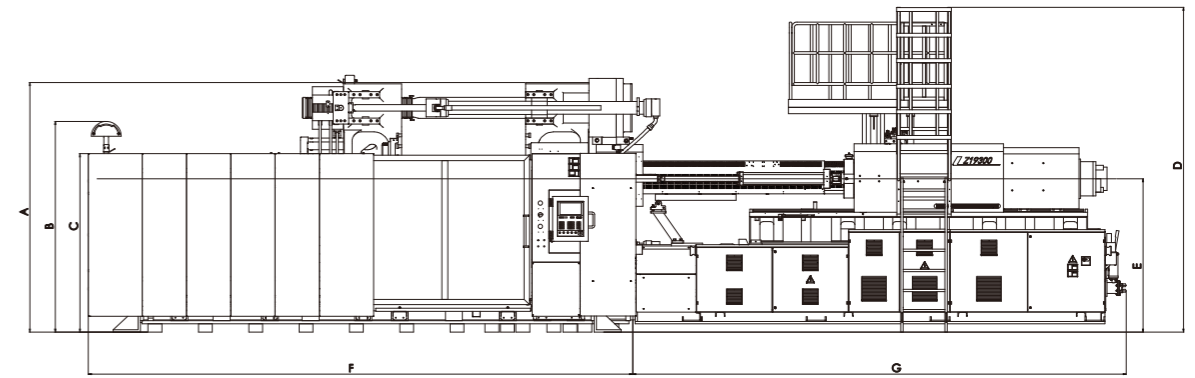
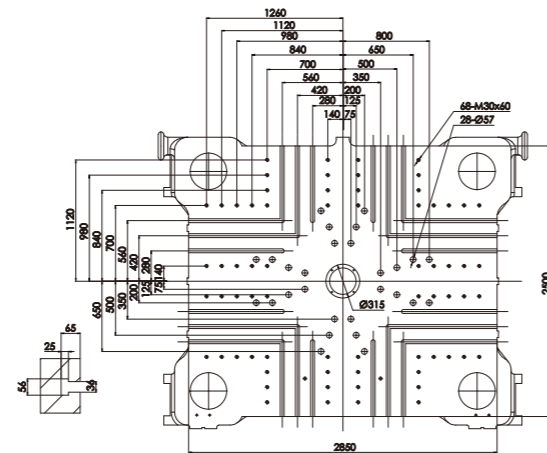
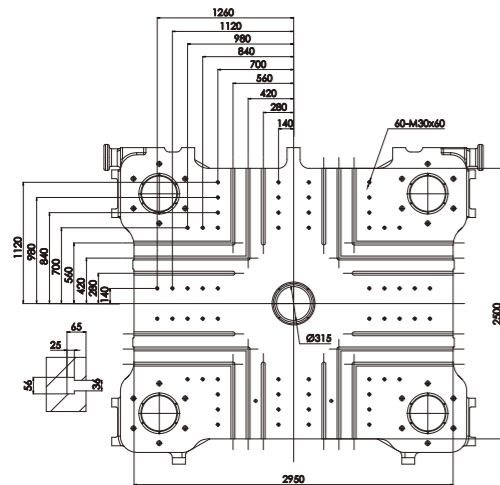
▼ upward view



▼ Dimensions of stationary platen

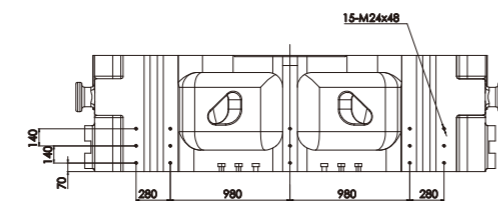
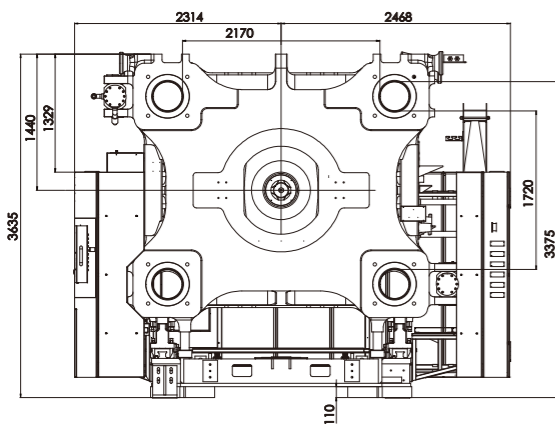
▼ Dimensions of moving platen

▼ main view



▼ Robot installation dimensions

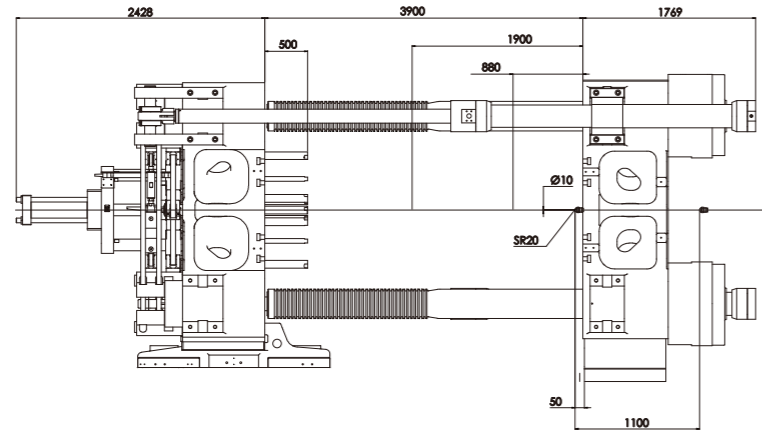
▼ Robot installation dimensions on stationary platen



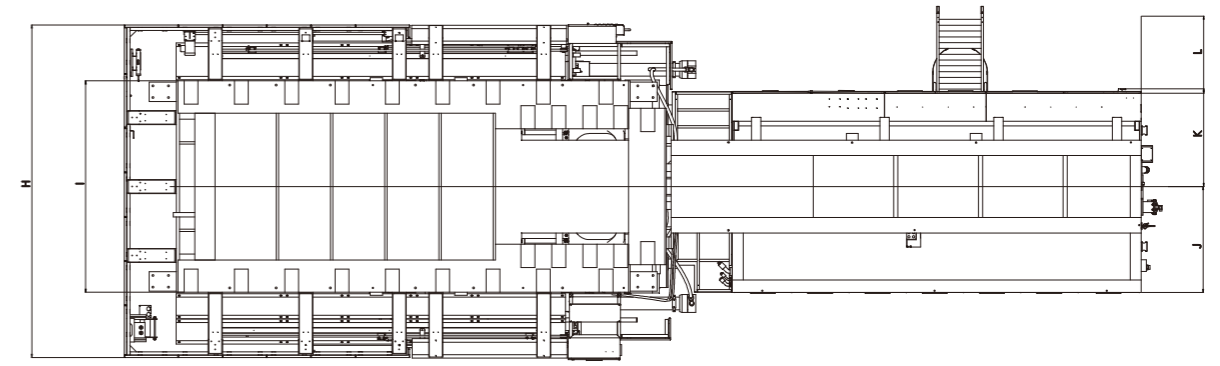
MODEL	A	B	C	D	E	F	G	H	I	J	K	L
BL2800DK-W	3635	3289	2306	4479	2195	7701	8278	4782	2820	1848	1648	886

Platen Dimensions & Machine Dimensions

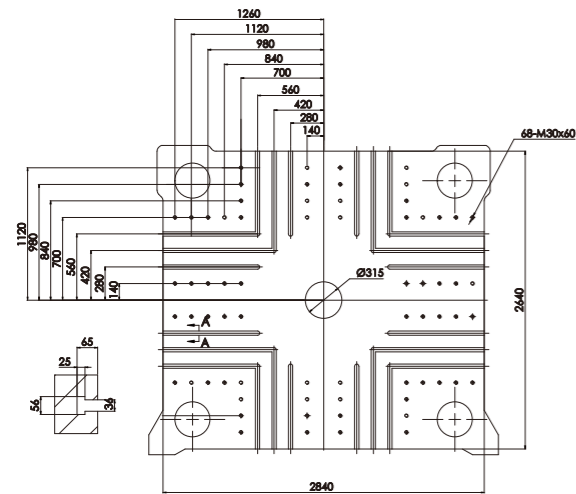
Clamping unit



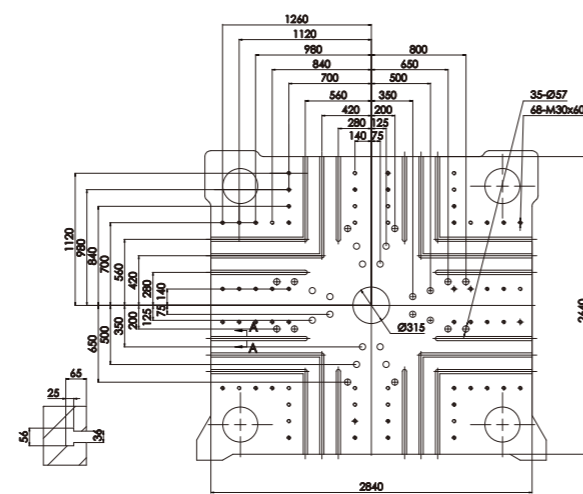
upward view



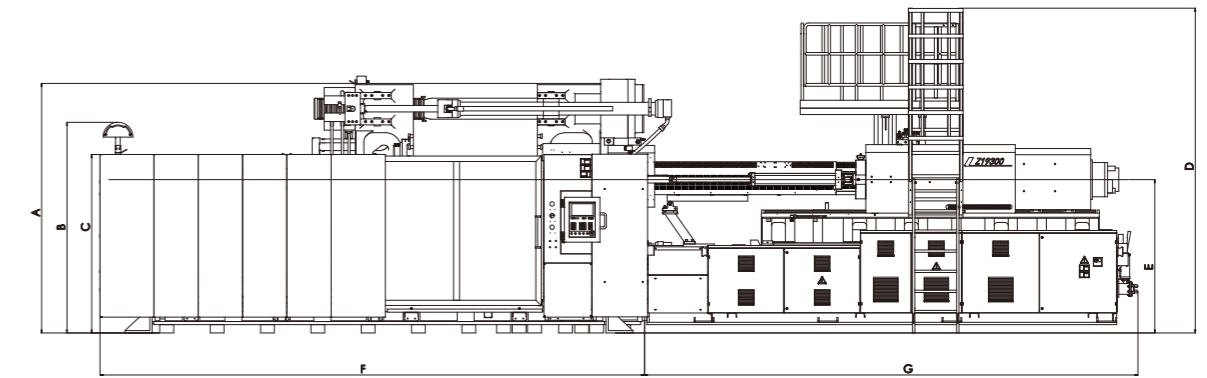
Dimensions of stationary platen



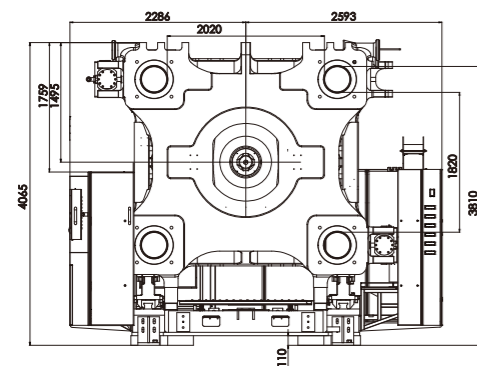
Dimensions of moving platen



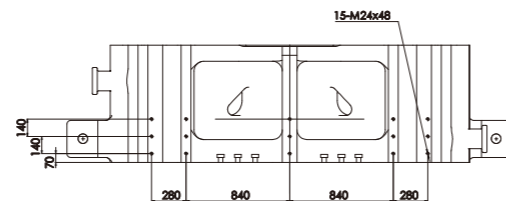
main view



Robot installation dimensions



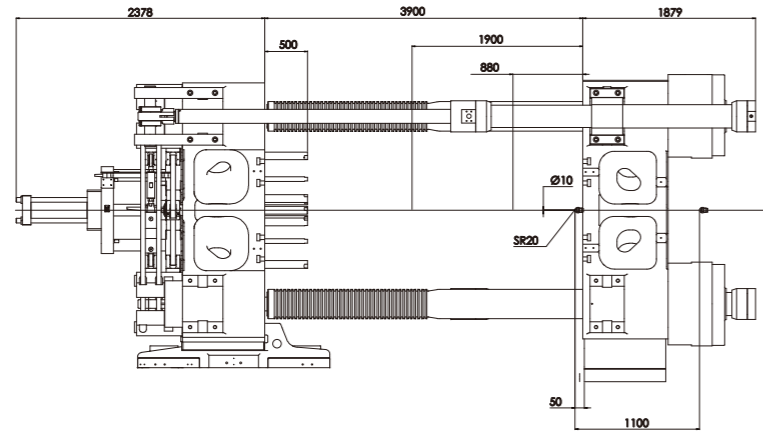
Robot installation dimensions on stationary platen



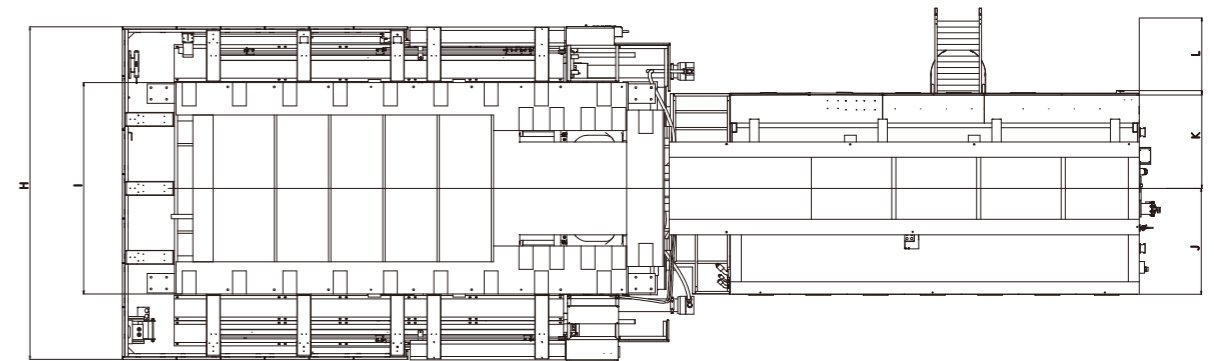
MODEL	A	B	C	D	E	F	G	H	I	J	K	L
BL3000DK	4020	2530	2306	4485	2570	7896	8234	4879	2760	1610	1392	995

Platen Dimensions & Machine Dimensions

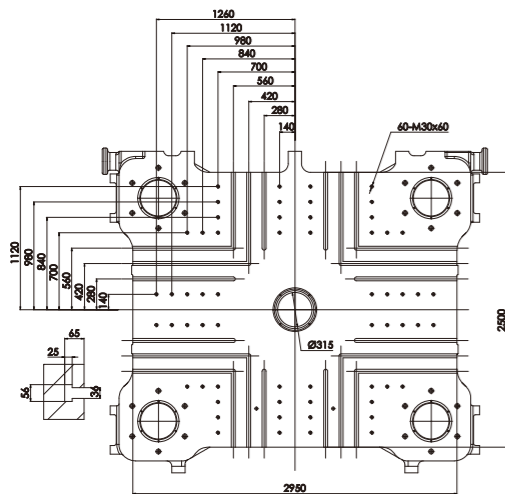
▼ Clamping unit



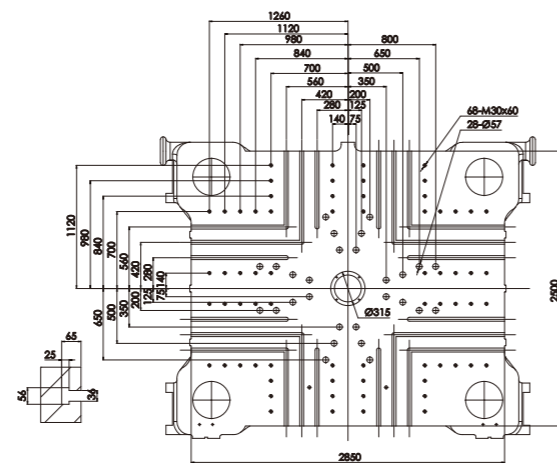
▼ upward view



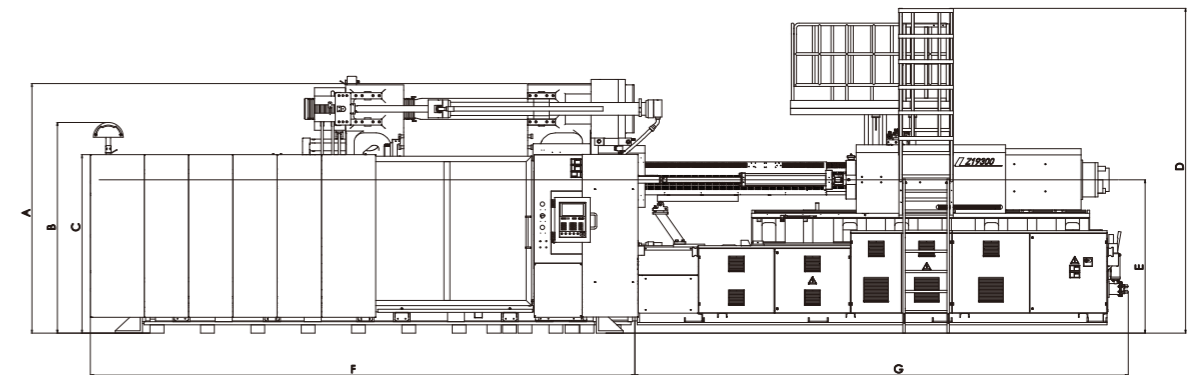
▼ Dimensions of stationary platen



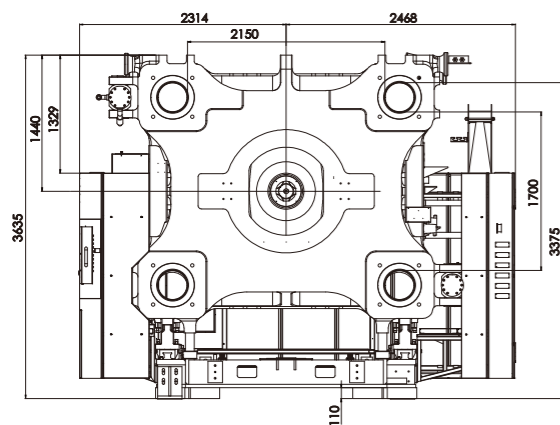
▼ Dimensions of moving platen



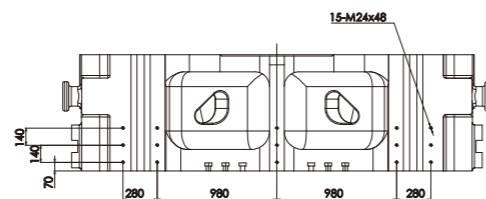
▼ main view



▼ Robot installation dimensions



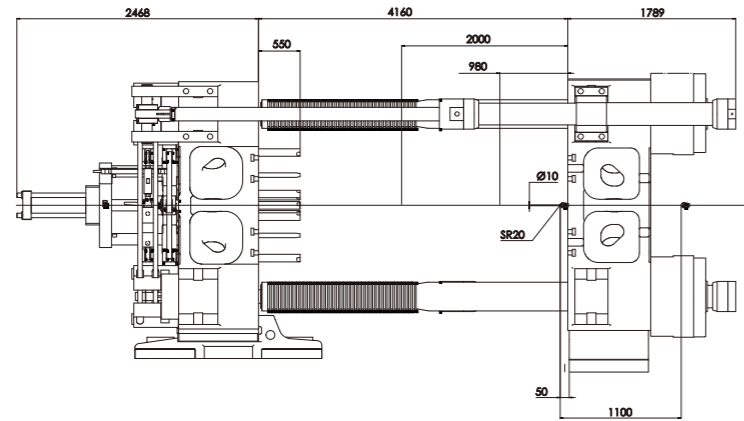
▼ Robot installation dimensions on stationary platen



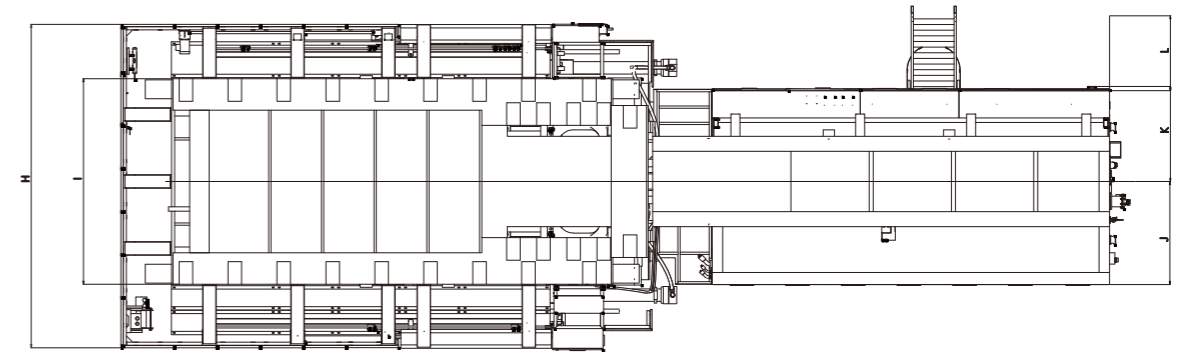
MODEL	A	B	C	D	E	F	G	H	I	J	K	L
BL3000DK-W	3635	3289	2306	4479	2195	7901	8278	4782	2820	1848	1648	886

Platen Dimensions & Machine Dimensions

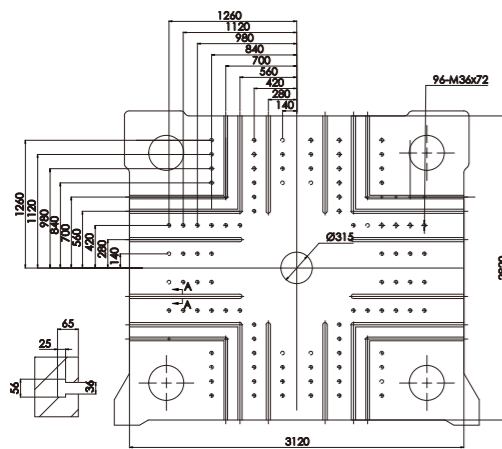
▼ Clamping unit



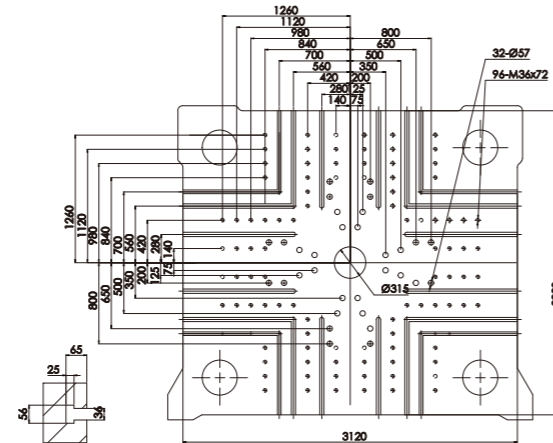
▼ upward view



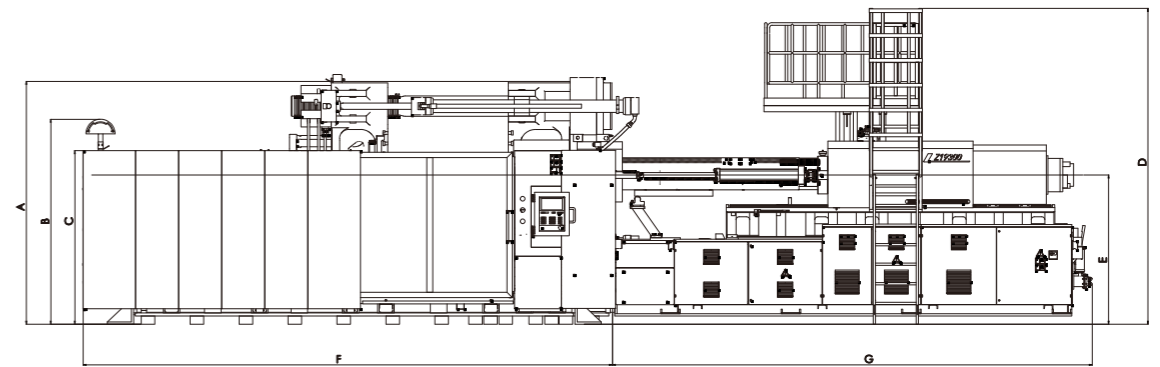
▼ Dimensions of stationary platen



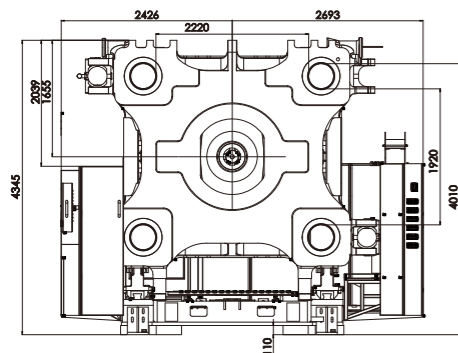
▼ Dimensions of moving platen



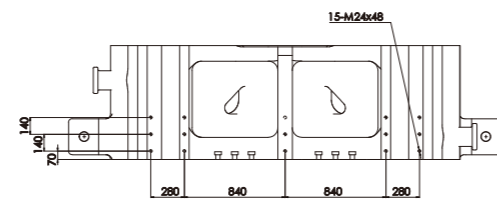
▼ main view



▼ Robot installation dimensions



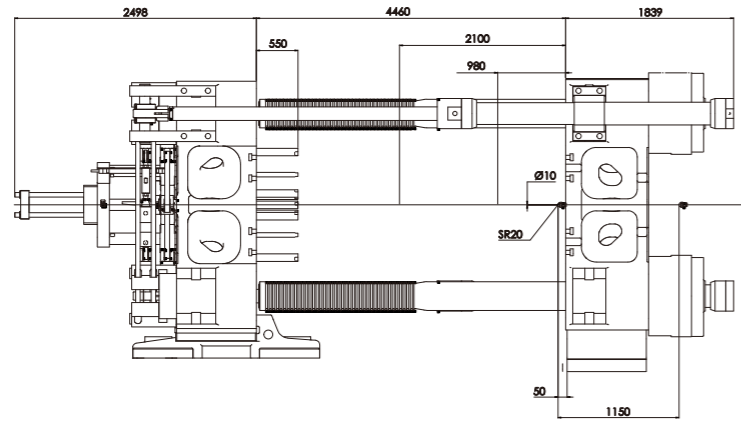
▼ Robot installation dimensions on stationary platen



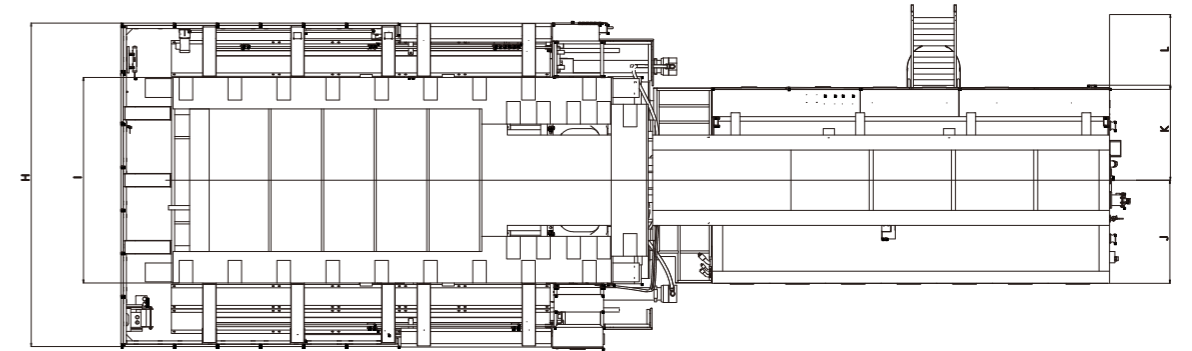
MODEL	A	B	C	D	E	F	G	H	I	J	K	L
BL3500DK	4220	2530	2306	4685	2690	8938	8970	5119	2890	1670	1452	995

Platen Dimensions & Machine Dimensions

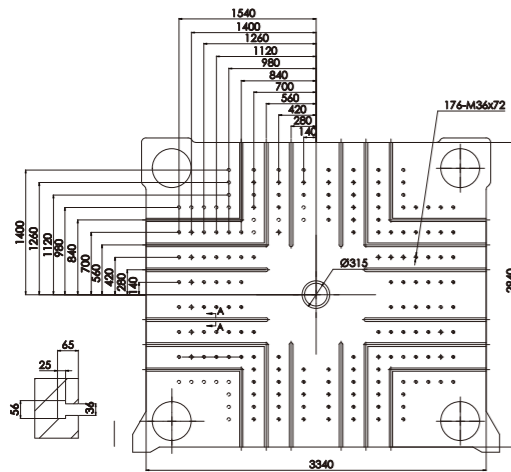
▼ Clamping unit



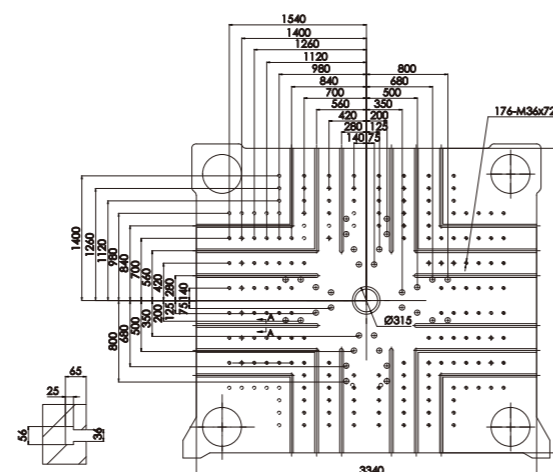
▼ upward view



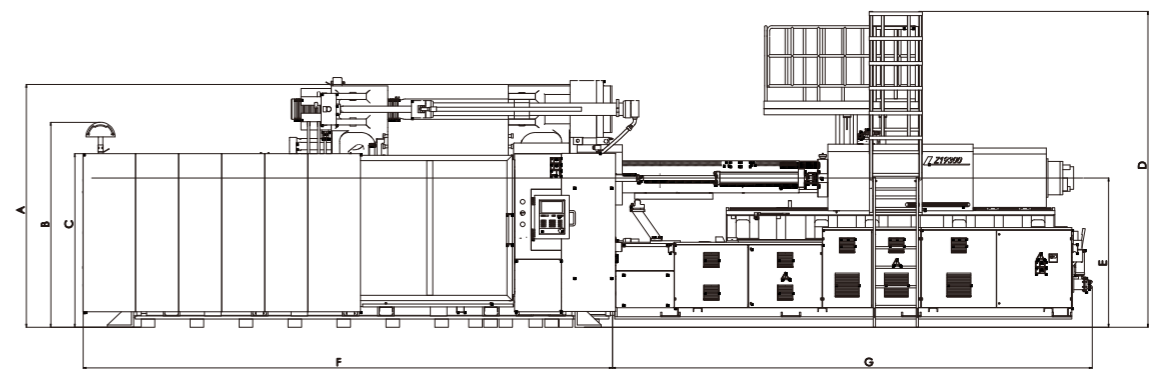
▼ Dimensions of stationary platen



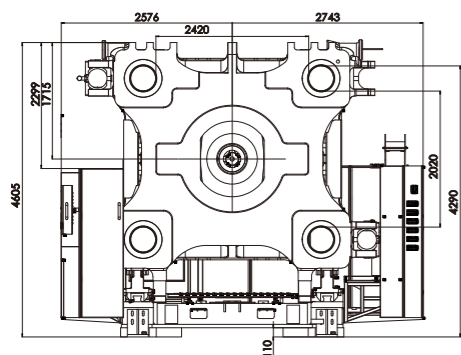
▼ Dimensions of moving platen



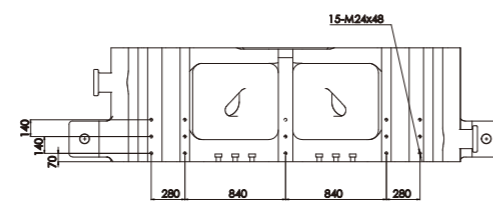
▼ main view



▼ Robot installation dimensions



▼ Robot installation dimensions on stationary platen



MODEL	A	B	C	D	E	F	G	H	I	J	K	L
BL4000DK	4420	2530	2306	4985	2890	10500	10000	5319	3190	1770	1552	995

● Standard ◎ Optional

Clamping Unit	520-1100DK		1400-3000DK		3500-6800DK	
	Standard	Optional	Standard	Optional	Standard	Optional
T-slot platen (including T-slot+Screw holes)	●		●		●	
Moving platen feet slip adopts linear guide rail support structure	●		●			◎
Anti-down support in slide shoes of movable platen,high hardness steel strip					●	
Hydraulic and electrical dual safety protection device	●		●		●	
Automatic mold height calibration	●		●		●	
Automatic adjustment of clamping force on demand	●		●		●	
Euomap U18 robot postion	●		●		●	
Lowpressure mould protect with high precision	●		●		●	
Equipped with safety screen in the clamping unit	●		●		●	
Auto-door control and safety switch in its bottom and confirmed button in mold closing	●		●		●	
The operation of the open/close mold,ejection is controlled by a high precision electronic ruler	●		●		●	
Optional:multiple ejector model,saperated setting pressure,speed	●		●		●	
Equipped with synchronous ejector and core pulling system	●		●		●	
Pull back the central ejecting rod to reset forcibly	●		●		●	
Two groups of water flow meter(one in stationary platen and one in moving platen, Below 950DK is 4 in/4 out, above 950DK is 6 in/6out)	●		●		●	
Self-detector for volumetric central oil lubrication,equiped with terminal pressure detection	●		●		●	
Two core puller as standard(one in stationary platen and one in moving platen),reserve one core puller in moving platen	●		●		●	
Differential hydraulic circuit for mold open	●		●		●	
Mold open/close proportional valve	●		●		●	
Emergency stop button on operating side and non-operating side both	●		●		●	
Magnetic Platen Eu70		◎		◎		◎
Hydraulic clamper		◎		◎		◎
Tie bar pull function		◎		◎		◎
Mould heat shiled plate		◎		◎		◎
Bigger mould height		◎		◎		◎
Quick mold change system		◎		◎		◎
Wider machine cover&door		◎		◎		◎
Bigger eject force		◎		◎		◎
Bigger eject stroke		◎		◎		◎
Scscrew hole platen		◎		◎		◎
Special requirements for water block (including fast plug-in, water glass tube flowmeter)		◎		◎		◎
Special number requirement of core		◎		◎		◎
2 air blow		◎		◎		◎

● Standard ◎ Optional

Injection Unit	520-1100DK		1400-3000DK		3500-6800DK	
	Standard	Optional	Standard	Optional	Standard	Optional
Injection/charging base use linear guide rail support structure	●		●		●	
German designed efficient plasticizing quality nitride steel screw barrel	●		●		●	
Barrel support	●		●		●	
Multi-section PID temperature control for nozzle and barrel	●		●		●	
Totally enclosed insulation cover, nozzle cover	●		●		●	
Injection stroke control with precise transducer	●		●		●	
The strimming device of the nozzle centering	●		●		●	
Time-setting heating function,screw cold start protection	●		●		●	
Screw anti-fluid device(pull-out/retract/suck back)	●		●		●	
Screw rotation speed detection	●		●		●	
Auto purge function for cleaning the barrel	●		●		●	
Proportional back pressure of charging	●		●		●	
Carriage manual control central lubrucation	●		●		●	
Extented nozzle,extent to 50mm	●		●		●	
Ceramic heating band	●		●		●	
(gas/water)assistant injection signal interface	●		●		●	
The material feed opening temperature control	●		●		●	
Bearing type mobile hopper seat with ordinary hopper	●			◎		◎
Hydraulic synchronous charging system		◎ (≤2300T)		● (≥2700T)		
Feeding plate,without hopper		◎	●			●
Carriage Automatic central lubrucation		◎		◎		◎
Special screw barrel (electroplating,alloy,and hard pcmma,pbt,pa,ect)		◎		◎		◎
Extented nozzle,extent to 100mm		◎		◎		◎
Spring or hydraulic,penumatic and shut off nozzle		◎		◎		◎
Enlarging the injection unit		◎		◎		◎
Decrease injection unit		◎		◎		◎
Infrared heating band		◎		◎		◎
Barrel fan coolingsystem		◎		◎		◎
Electrical charging		◎		◎		◎
Signal interface of dosing color machine		◎		◎		◎
Micro-foaming molding		◎		◎		◎
Upgrade plasticizing motor		◎		◎		◎
Nitrogen injection function (Accelerate container)		◎		◎		◎

● Standard ◎ Optional

Control Unit & Hydraulic Unit	520-1100DK		1400-3000DK		3500-6800DK	
	Standard	Optional	Standard	Optional	Standard	Optional
KEBA computer (12 inch)	●		●		●	
Multiple operating language	●		●		●	
Tricolor alarm light	●		●		●	
Real-time clamping force monitoring	●		●		●	
Euromap U12 manipulator interface	●		●		●	
USB interface,easy backup panel application update and mould parameters save	●		●		●	
Have stop memory function,random can store 240 setsmould data	●		●		●	
Abnormal alarm and modified record	●		●		●	
Multi-level password settings to prevent the error revising/changing unintentionally and the user could be freely authorized the qualifier to access the related password level as request	●		●		●	
Input,output point detection and i/o online simulation function,can quickly confirm the machine operation status	●		●		●	
Quality data process monitoring interface	●		●		●	
Production statistical process control real-time list interface(SPC)	●		●		●	
Socket:5-core 32Ax2+5-core 16Ax1,3-core multi-functionx2	●		●		●	
Injection moulding machine industry 4.0 network monitoring system interface	●		●		●	
Servo energy-saving system	●		●		●	
Oil temperature detection, deviation automatic alarm	●		●		●	
Motor overload protection function	●		●		●	
Independent cooling filtration system	●		●		●	
Computer KEBA (15")		◎		◎		◎
Euro map67 robot interface		◎		◎		◎
Process data protection lock		◎		◎		◎
Hot runner interface		◎		◎		◎
Special requirement socket		◎		◎		◎
Computer network centralized control,network monitoring system		◎		◎		◎
Real-time energy consumption monitoring		◎		◎		◎
The computer has built-in operation instruction to view the function		◎		◎		◎
Multi-group sequential injection function		◎		◎		◎
Upgrade servo pump&motor system		◎		◎		◎

● Standard ◎ Optional

Other parts	520-1100DK		1400-3000DK		3500-6800DK	
	Standard	Optional	Standard	Optional	Standard	Optional
Standard machine color of BOLE DK	●		●		●	
Adjustable level pad	●		●		●	
L-shaped fixed block	●		●		●	
Spare parts tool box,common tools,vulnerable parts,extended nozzle,user's guide	●		●		●	
Special color		◎		◎		◎
Robot		◎		◎		◎
Magnetic frame		◎		◎		◎
Hopper dryer		◎		◎		◎
Auto-loader		◎		◎		◎
Fumigation wood package		◎		◎		◎
Pick-up platform		◎		◎		◎
Hydraulic oil		◎		◎		◎
Multiple language warning signs		◎		◎		◎
Anchor bolt		◎		◎		◎